

# Metadata Standard for Marine Plans

TEG Subgroup

Denise O'Sullivan and Andrew Conway, Marine Institute

# Update since Las Palmas

---

Call for feedback in September went unanswered

- Another chance today for final feedback

## What needs to be changed?

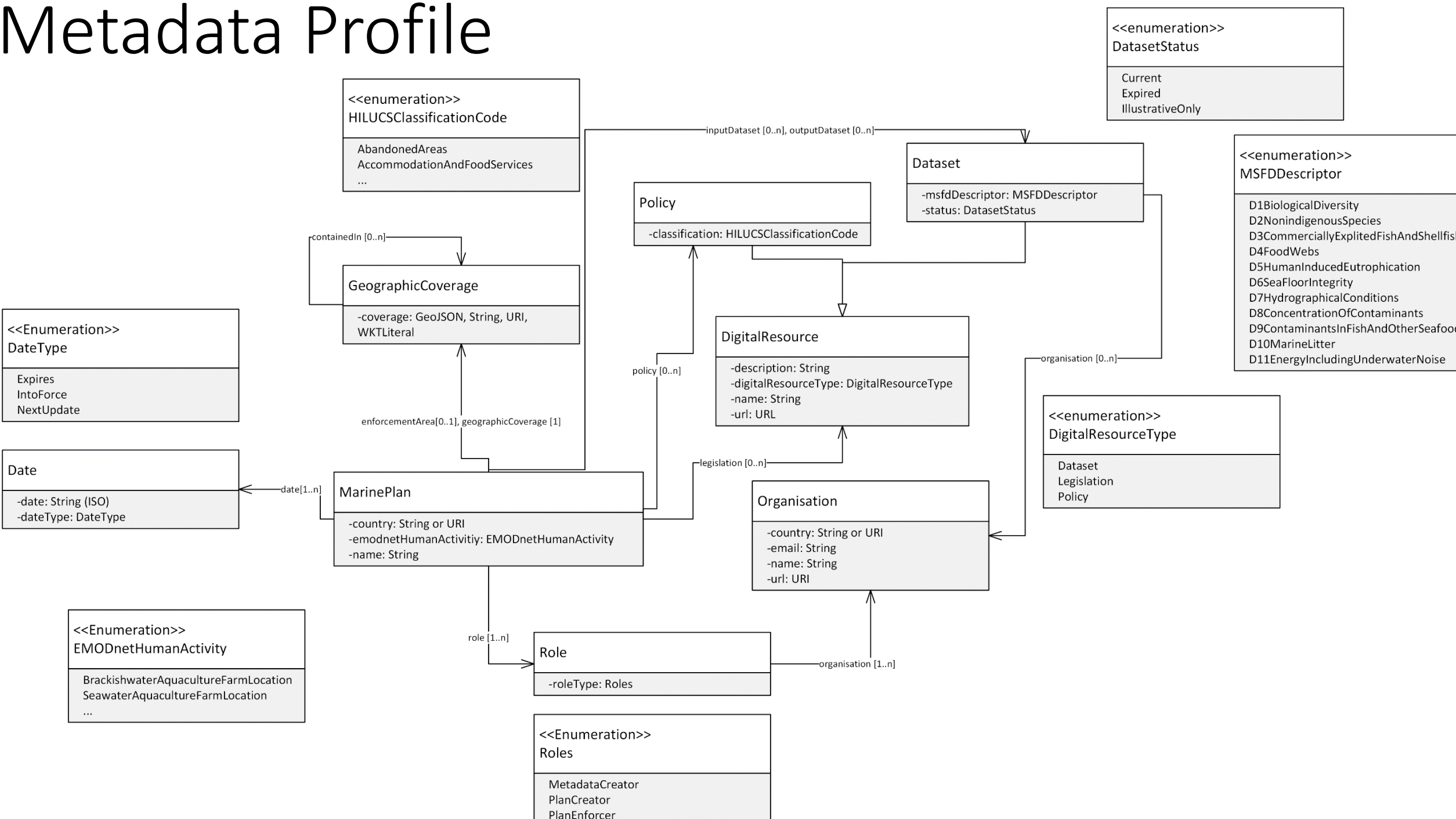
- Are you happy with what's included?
- Is there a need to add/remove fields?

## Implementation

- EMODNET kindly agreed to adopt the output of the subgroup
  - need to link up with Jose and Marta
- Timeline
- Enforcement



# Metadata Profile



# Metadata Profile – Listed

---

- Dataset
- Dataset Status
- Date
- EMODnet Human Activity
- Geographic Coverage
- HILUCS Classification Code
- Legislation
- MSFD Descriptor
- Marine Plan
- Organisation
- Policy
- Role

# Implementation Example

Dataset	Seabed Sediment Classification
MSFDDescriptor	D6SeaFloorIntegrity
status	Current
TemporalCoverage	1999/01/01 – Ongoing
GeographicCoverage	POLYGON ((-5.27233 48.180187833, -16.09085 48.180187833, -16.09085 56.7, -5.27233 56.7, -5.27233 48.180187833))
Policy	
classification	MiningAndQuarrying
MarinePlan	National Marine Planning Framework
country	Ireland
emodnetHumanActivity	SDN:HA2::HA20031
Date	
date	1999-01-01
dateType	intoForce
Role	MetadataCreator
DigitalResource	
description	Web Map Service
digitalResourceType	Dataset
name	INFOMAR Seabed Folk
url	<a href="http://maps.marine.ie/arcgis/rest/services/Infomar/INFOMAR_Seabed_Folk/MapServer">http://maps.marine.ie/arcgis/rest/services/Infomar/INFOMAR_Seabed_Folk/MapServer</a>
Organisation	
country	Ireland
email	datarequests@marine.ie
name	Marine Institute
url	www.marine.ie/Home

# Next Steps

---

- Adopt metadata standard on EMODnet
- Technical report by Adam –  
<https://irishmarineinstitute.github.io/metadata-profile-for-marine-plans/index.html>
- Will need to be modified and finalized – shared with subgroup (likely end of January)

Questions?

Email: [denise.osullivan@marine.ie](mailto:denise.osullivan@marine.ie)