

REVIEWING AND
EVALUATING THE
MONITORING AND
ASSESSMENT OF
MARITIME SPATIAL
PLANNING

ReMAP

MSP Input Data Module: Operationalizing the MSP Data Framework for Systematic Assessment of MSP Data Collections

Andrej Abramic, L.M. Pulido Santiago, A.R. Trujillo Pino, N. M. Monzón López, V. Coredero-Penin, Y. Fernandez-Palacios, Yolanda Irawán, Jose Luis Santiago

Technical Expert Group on Data for MSP: **From conceptual development to application**

03/06/2026, MSP Week, Brussels

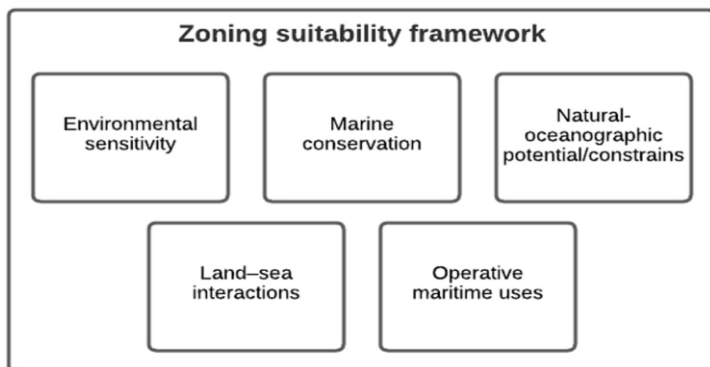


Co-funded by
the European Union

MSP data Framework (MSPdF) 2023

Technical Expert Group on data for MSP

<https://maritime-spatial-planning.ec.europa.eu/msp-resources/technical-expert-group-teg-data-msp>

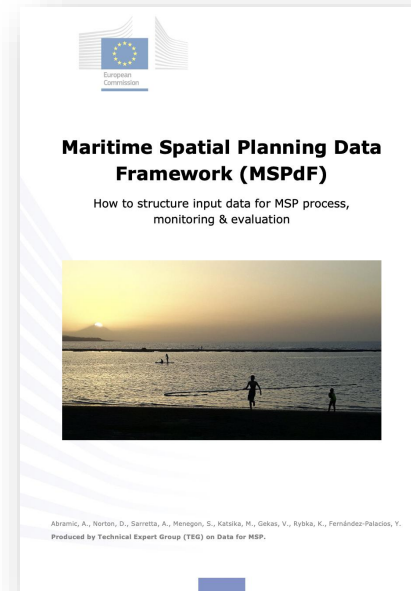


MSP Input Data required for analysing initial conditions

- **Oceanographic spatial information** (ocean temperature, waves, currents...)
- **Data on marine environment** (eutrophication level, benthic habitat status...)
- **Marine conservation** (extension and objectives of Marine Protected Areas...)
- **Information on coastal and maritime activities** (aquaculture, ocean energy facilities, coastal tourism, ports and harbours...)
- **Socio-economic information** (coastal population, unemployment, income by sector...)
- **Governance information** (administrative units, prospecting permits...)

MSP Data Framework Input data for MSP process and continuous evaluation

- Data cluster 1**
Marine & Coastal Environment
MSFD Good Environmental Status
WFD Good Ecological Status
- Data cluster 2**
Marine & Coastal Conservation and Designated sites
Management, Restriction and Regulation
- Data cluster 3**
Oceanographic characteristics and Climate
Ocean variables, physical & chemical parameters
- Data cluster 4**
Coastal Land use and Planning
Coastal current activities & Land planning
- Data cluster 5**
Operative maritime activities and Planning
Maritime current uses and maritime Spatial Planning
- Data cluster 6**
Socio-economic information
Socio-demographic and Economic data
- Data cluster 7**
Governance information
Competence & Legislation



Co-funded by
the European Union

European Commission/CINEA publication:

Maritime Spatial Planning Data Framework (MSPdF)

How to structure input data for MSP process, monitoring & evaluation

https://cinea.ec.europa.eu/publications/maritime-spatial-planning-data-framework-mspdf_en

<https://maritime-spatial-planning.ec.europa.eu/msp-resources/technical-expert-group-teg-data-msp>

The use of the selected data clusters and checklists in the MSP process provides the following interests and benefits:

- **Guides data collection**
- **Structures Input spatial information and data**
- **Facilitates identification of data gaps**
- **Identifies relevant information not previously included in MSP process**
- **First milestone for MSP input data harmonisation - improves interoperability (structure and proposed harmonisation data models and semantic code lists)**
- **Improves comparability of applied data collections**
- **Improves the analyses potential and results comparability**
- **Supports design for monitoring and evaluation**



Maritime Spatial Planning Data Framework (MSPdF)

How to structure input data for MSP process,
monitoring & evaluation



Abramic, A., Norton, D., Sarretta, A., Menegon, S., Katsika, M., Gekas, V., Rybka, K., Fernández-Palacios, Y.
Produced by Technical Expert Group (TEG) on Data for MSP.

Clusters and Check lists

MSP Data Framework	
Input data for MSP process and continuous evaluation	
Marine & Coastal Environment	<u>Data cluster 1</u>
MSFD Good Environmental Status	
WFD Good Ecological Status	
<u>Data cluster 2</u>	
Marine & Coastal Conservation and Designated sites	
Management, Restriction and Regulation	
<u>Data cluster 3</u>	
Oceanographic characteristics and Climate	
Ocean variables, physical & chemical parameters	
<u>Data cluster 4</u>	
Coastal Land use and Planning	
Coastal current activities & Land planning	
<u>Data cluster 5</u>	
Operative maritime activities and Planning	
Maritime current uses and maritime Spatial Planning	
<u>Data cluster 6</u>	
Socio-economic information	
Socio-demographic and Economic data	
<u>Data cluster 7</u>	
Governance information	
Competence & Legislation	

<u>Data cluster 1</u>
Marine Strategy Framework Directive 2008/56/EC, Good Environmental Status COM 2017/848/EU
Descriptor 1: Biodiversity
– Species groups of seabirds, marine mammals, fish and cephalopods
– Pelagic habitats
– Benthic habitats
Descriptor 2: Non-indigenous species
Descriptor 3: Commercial species
Descriptor 4: Marine food webs
Descriptor 5: Human-induced eutrophication
Descriptor 6: Sea floor integrity
Descriptor 7: Hydrographical conditions
Descriptor 8: Contaminants
Descriptor 9: Contamination of fish and seafoods
Descriptor 10: Marine litter
Descriptor 11: Energy and noise

<u>Data cluster 1</u>
Water Framework Directive 2000/60/EC
Good Ecological Status
Biological Quality Elements:
– Phytoplankton
– Phytobentos
– Benthic Invertebrates
– Fish
– Macrophytes
Physico-chemical elements:
– Nutrients
– Organic pollutions
– Acidification
– Specific pollution
Hydromorphology elements:
– Hydrology
– Morphology

Clusters and Check lists

MSP Data Framework	
Input data for MSP process and continuous evaluation	
	Data cluster 1
Marine & Coastal Environment	
MSFD Good Environmental Status	
WFD Good Ecological Status	
	Data cluster 2
Marine & Coastal Conservation and Designated sites	
Management, Restriction and Regulation	
	Data cluster 3
Oceanographic characteristics and Climate	
Ocean variables, physical & chemical parameters	
	Data cluster 4
Coastal <i>Land use</i> and Planning	
Coastal current activities & Land planning	
	Data cluster 5
Operative maritime activities and Planning	
Maritime current uses and maritime Spatial Planning	
	Data cluster 6
Socio-economic information	
Socio-demographic and Economic data	
	Data cluster 7
Governance information	
Competence & Legislation	

	Data cluster 1
Marine Strategy Framework Directive 2008/56/EC,	
Good Environmental Status COM 2017/848/EU	
Descriptor 1: Biodiversity	
– Species groups of seabirds, marine mammals, fish and cephalopods	
– Pelagic habitats	
– Benthic habitats	
Descriptor 2: Non-indigenous species	
Descriptor 3: Commercial species	
Descriptor 4: Marine food webs	
Descriptor 5: Human-induced eutrophication	
Descriptor 6: Sea floor integrity	
Descriptor 7: Hydrographical conditions	
Descriptor 8: Contaminants	
Descriptor 9: Contamination of fish and seafoods	
Descriptor 10: Marine litter	
Descriptor 11: Energy and noise	

	Data cluster 2
Marine & Coastal Conservation and Designated sites	
	Data cluster 3
Oceanographic characteristics and Climate	
EMODnet Physics:	
– Waves	
– Water Temperature	
– Water Salinity	
– Currents	
– Optical Properties	
– Sea Level	
– Atmospheric Pressure	
– Winds	
– Water conductivity / BioGeoChemical	
Bathymetry	

	Data cluster 1
Water Framework Directive 2000/60/EC	
Good Ecological Status	
Biological Quality Elements:	
– Phytoplankton	
– Phytobentos	
– Benthic Invertebrates	
– Fish	
– Macrophytes	
Physico-chemical elements:	
– Nutrients	
– Organic pollutions	
– Acidification	
– Specific pollution	
Hydromorphology elements:	
– Hydrology	
– Morphology	

Clusters and Check lists

MSP Data Framework Input data for MSP process and continuous evaluation	Data cluster 1
Marine & Coastal Environment MSFD Good Environmental Status WFD Good Ecological Status	Data cluster 2
Marine & Coastal Conservation and Designated sites Management, Restriction and Regulation	Data cluster 3
Oceanographic characteristics and Climate Ocean variables, physical & chemical parameters	Data cluster 4
Coastal Land use and Planning Coastal current activities & Land planning	Data cluster 5
Operative maritime activities and Planning Maritime current uses and maritime Spatial Planning	Data cluster 6
Socio-economic information Socio-demographic and Economic data	Data cluster 7
Governance information Competence & Legislation	

Data cluster 1 Marine Strategy Framework Directive 2008/56/EC, Good Environmental Status COM 2017/848/EU
Descriptor 1: Biodiversity
– Species groups of seabirds, marine mammals, fish and cephalopods
– Pelagic habitats
– Benthic habitats
Descriptor 2: Non-indigenous species
Descriptor 3: Commercial species
Descriptor 4: Marine food webs
Descriptor 5: Human-induced eutrophication
Descriptor 6: Sea floor integrity
Descriptor 7: Hydrographical conditions
Descriptor 8: Contaminants
Descriptor 9: Contamination of fish and seafoods
Descriptor 10: Marine litter
Descriptor 11: Energy and noise

Data cluster 2 Marine & Coastal Conservation and Designated sites	Data cluster 3
Oceanographic characteristics and Climate	Data cluster 4
Coastal Land use & Planning Coastal current and planned Land use following	
Hierarchical INSPIRE Land Use Classification System*:	
– Primary production	
– Secondary production	
– Tertiary production	
– Transport networks logistics and utilities	
– Residential use	
– Other uses	
* https://inspire.ec.europa.eu/codelist/HILUCSValue	

Data cluster 1 Water Framework Directive 2000/60/EC
Good Ecological Status
Biological Quality Elements:
– Phytoplankton
– Phytobentos
– Benthic Invertebrates
– Fish
– Macrophytes
Physico-chemical elements:
– Nutrients
– Organic pollutions
– Acidification
– Specific pollution
Hydromorphology elements:
– Hydrology
– Morphology

Clusters and Check lists

MSP Data Framework	
Input data for MSP process and continuous evaluation	
Marine & Coastal Environment	Data cluster 1
MSFD Good Environmental Status	
WFD Good Ecological Status	
Marine & Coastal Conservation and Designated sites	Data cluster 2
Management, Restriction and Regulation	
Oceanographic characteristics and Climate	Data cluster 3
Ocean variables, physical & chemical parameters	
Coastal <i>Land use</i> and Planning	Data cluster 4
Coastal current activities & Land planning	
Operative maritime activities and Planning	Data cluster 5
Maritime current uses and maritime Spatial Planning	
Socio-economic information	Data cluster 6
Socio-demographic and Economic data	
Governance information	Data cluster 7
Competence & Legislation	

Data cluster 1
Marine Strategy Framework Directive 2008/56/EC, Good Environmental Status COM 2017/848/EU
Descriptor 1: Biodiversity
– Species groups of seabirds, marine mammals, fish and cephalopods
– Pelagic habitats
– Benthic habitats
Descriptor 2: Non-indigenous species
Descriptor 3: Commercial species
Descriptor 4: Marine food webs
Descriptor 5: Human-induced eutrophication
Descriptor 6: Sea floor integrity
Descriptor 7: Hydrographical conditions
Descriptor 8: Contaminants
Descriptor 9: Contamination of fish and seafoods
Descriptor 10: Marine litter
Descriptor 11: Energy and noise

Data cluster 1
Water Framework Directive 2000/60/EC
Good Ecological Status
Biological Quality Elements:
– Phytoplankton
– Phytobentos
– Benthic Invertebrates
– Fish
– Macrophytes
Physico-chemical elements:
– Nutrients
– Organic pollutions
– Acidification
– Specific pollution
Hydromorphology elements:
– Hydrology
– Morphology

Data cluster 2
Marine & Coastal Conservation and Designated sites
Data cluster 3
Oceanographic characteristics and Climate
Data cluster 4
Coastal Land use & Planning
Data cluster 5
Operative maritime activities and Planning
Maritime current & planned uses following
Extended Hierarchical INSPIRE Land Use Classification System
for maritime activities & MSP*:
– Primary production
– Secondary production
– Tertiary production
– Transport networks logistics and utilities
– Other uses
* http://www.geoportal.ulpgc.es/registro/plannedLandUse/HilucsExt/index.html

Clusters and Check lists

MSP Data Framework	
Input data for MSP process and continuous evaluation	
Marine & Coastal Environment	Data cluster 1
MSFD Good Environmental Status	
WFD Good Ecological Status	
Marine & Coastal Conservation and Designated sites	Data cluster 2
Management, Restriction and Regulation	
Oceanographic characteristics and Climate	Data cluster 3
Ocean variables, physical & chemical parameters	
Coastal Land use and Planning	Data cluster 4
Coastal current activities & Land planning	
Operative maritime activities and Planning	Data cluster 5
Maritime current uses and maritime Spatial Planning	
Socio-economic information	Data cluster 6
Socio-demographic and Economic data	
Governance information	Data cluster 7
Competence & Legislation	

Data cluster 1	
Marine Strategy Framework Directive 2008/56/EC, Good Environmental Status COM 2017/848/EU	
Descriptor 1: Biodiversity	
<ul style="list-style-type: none"> – Species groups of seabirds, marine mammals, fish and cephalopods – Pelagic habitats – Benthic habitats 	
Descriptor 2: Non-indigenous species	
Descriptor 3: Commercial species	
Descriptor 4: Marine food webs	
Descriptor 5: Human-induced eutrophication	
Descriptor 6: Sea floor integrity	
Descriptor 7: Hydrographical conditions	
Descriptor 8: Contaminants	
Descriptor 9: Contamination of fish and seafoods	
Descriptor 10: Marine litter	
Descriptor 11: Energy and noise	

Data cluster 1	
Water Framework Directive 2000/60/EC	
Good Ecological Status	
Biological Quality Elements:	
<ul style="list-style-type: none"> – Phytoplankton – Phytobentos – Benthic Invertebrates – Fish – Macrophytes 	
Physico-chemical elements:	
<ul style="list-style-type: none"> – Nutrients – Organic pollutions – Acidification – Specific pollution 	
Hydromorphology elements:	
<ul style="list-style-type: none"> – Hydrology – Morphology 	

Data cluster 2	
Marine & Coastal Conservation and Designated sites	Data cluster 3
Oceanographic characteristics and Climate	Data cluster 4
Coastal Land use & Planning	Data cluster 5
Operative maritime activities and Planning	Data cluster 6
Socio-economic information	
Socio-demographic:	
<ul style="list-style-type: none"> – Population characteristics 	
Economic information:	
<ul style="list-style-type: none"> – Coastal & Ocean economy – Coastal & Maritime sectors jobs & income 	

Clusters and Check lists

MSP Data Framework	
Input data for MSP process and continuous evaluation	
Marine & Coastal Environment	Data cluster 1
MSFD Good Environmental Status	
WFD Good Ecological Status	
Marine & Coastal Conservation and Designated sites	Data cluster 2
Management, Restriction and Regulation	
Oceanographic characteristics and Climate	Data cluster 3
Ocean variables, physical & chemical parameters	
Coastal <i>Land use</i> and Planning	Data cluster 4
Coastal current activities & Land planning	
Operative maritime activities and Planning	Data cluster 5
Maritime current uses and maritime Spatial Planning	
Socio-economic information	Data cluster 6
Socio-demographic and Economic data	
Governance information	Data cluster 7
Competence & Legislation	

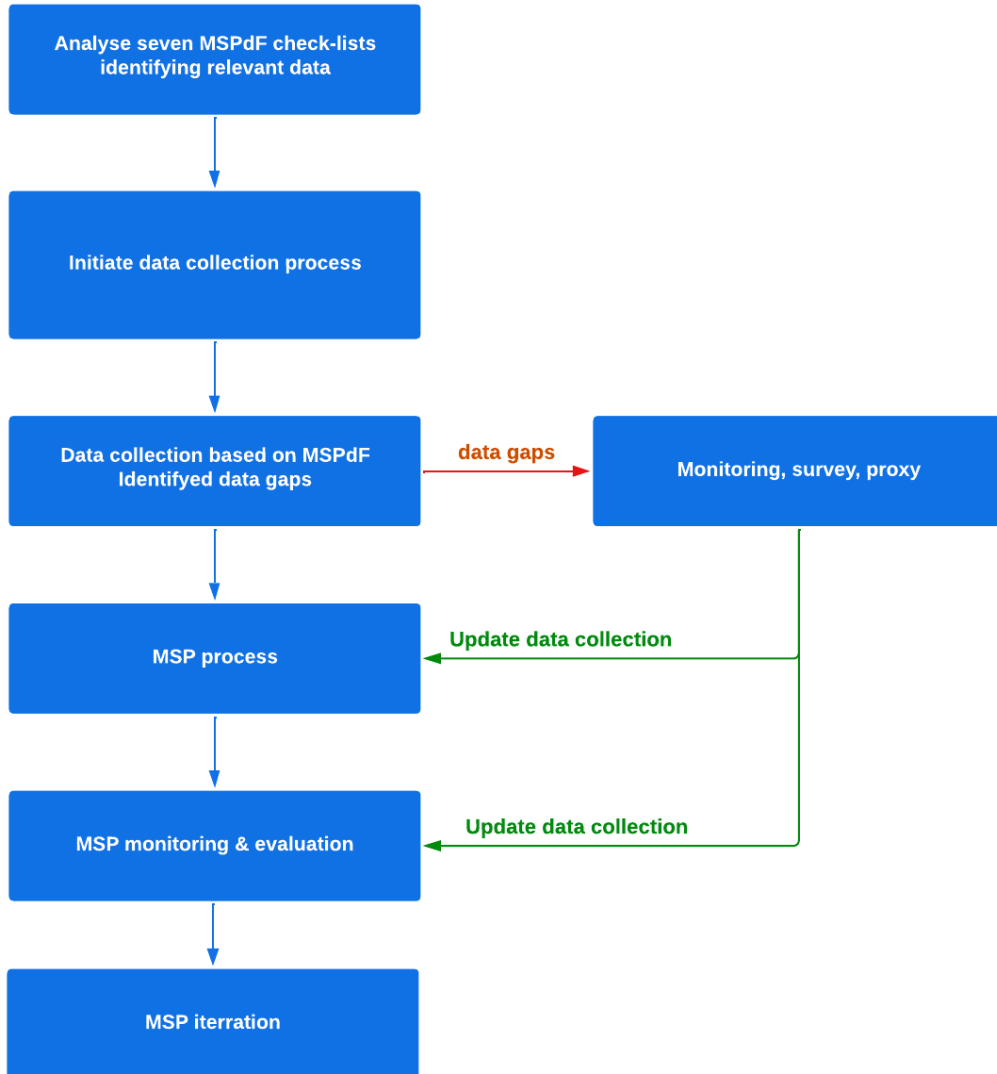
Data cluster 1	
Marine Strategy Framework Directive 2008/56/EC, Good Environmental Status COM 2017/848/EU	
Descriptor 1: Biodiversity	
<ul style="list-style-type: none"> – Species groups of seabirds, marine mammals, fish and cephalopods – Pelagic habitats – Benthic habitats 	
Descriptor 2: Non-indigenous species	
Descriptor 3: Commercial species	
Descriptor 4: Marine food webs	
Descriptor 5: Human-induced eutrophication	
Descriptor 6: Sea floor integrity	
Descriptor 7: Hydrographical conditions	
Descriptor 8: Contaminants	
Descriptor 9: Contamination of fish and seafoods	
Descriptor 10: Marine litter	
Descriptor 11: Energy and noise	

Data cluster 1	
Water Framework Directive 2000/60/EC	
Good Ecological Status	
Biological Quality Elements:	
<ul style="list-style-type: none"> – Phytoplankton – Phytobentos – Benthic Invertebrates – Fish – Macrophytes 	
Physico-chemical elements:	
<ul style="list-style-type: none"> – Nutrients – Organic pollutions – Acidification – Specific pollution 	
Hydromorphology elements:	
<ul style="list-style-type: none"> – Hydrology – Morphology 	

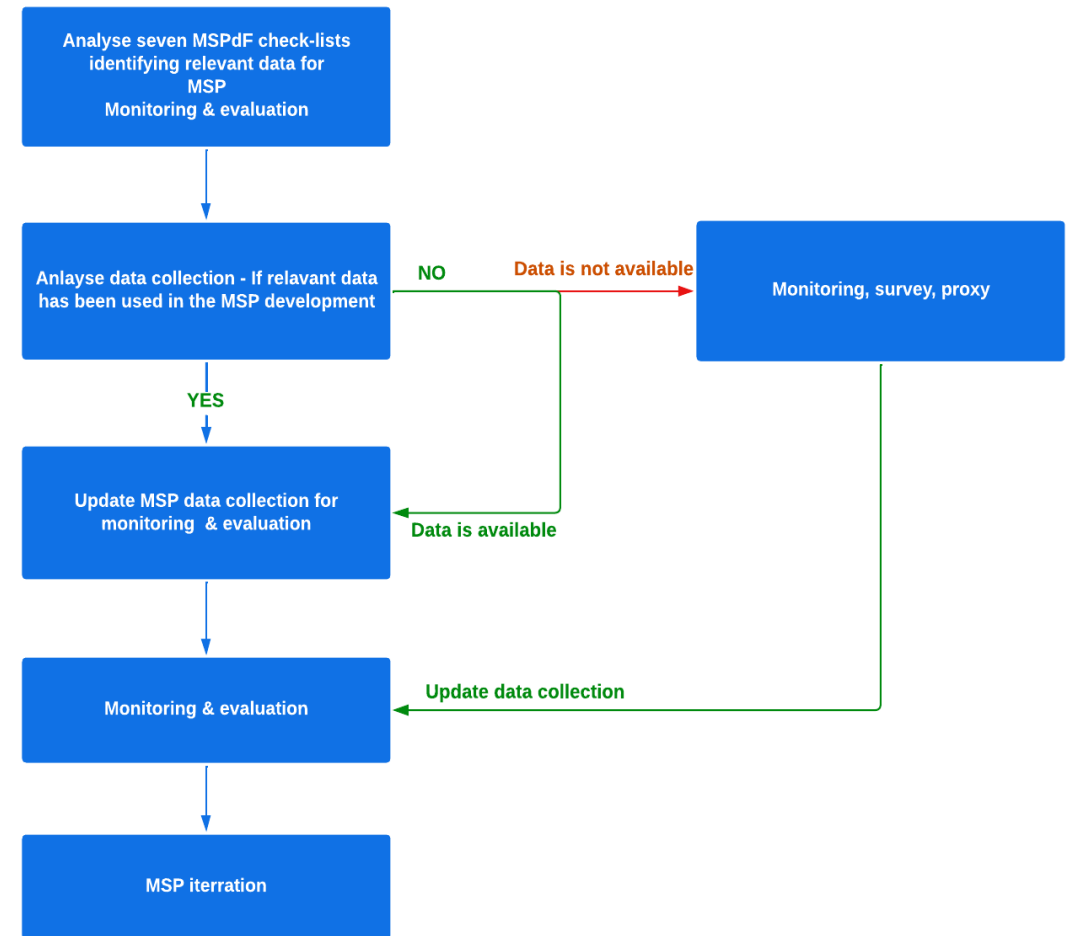
Data cluster 2	
Marine & Coastal Conservation and Designated sites	Data cluster 3
Oceanographic characteristics and Climate	
Coastal Land use & Planning	Data cluster 4
Operative maritime activities and Planning	Data cluster 5
Socio-economic information	Data cluster 6
Governance information	Data cluster 7
Administrative competence:	
<ul style="list-style-type: none"> – Area of planning – Maritime activities – Coastal Activities 	
(Inter)national regulations:	
<ul style="list-style-type: none"> – Conventions – Legislation – Policies 	

Application of the MSPdF

Data collection



Monitoring & Evaluation



Input data module: Operationalizing the MSP Data Framework

<https://remap.cetmar.org/input-data.html>

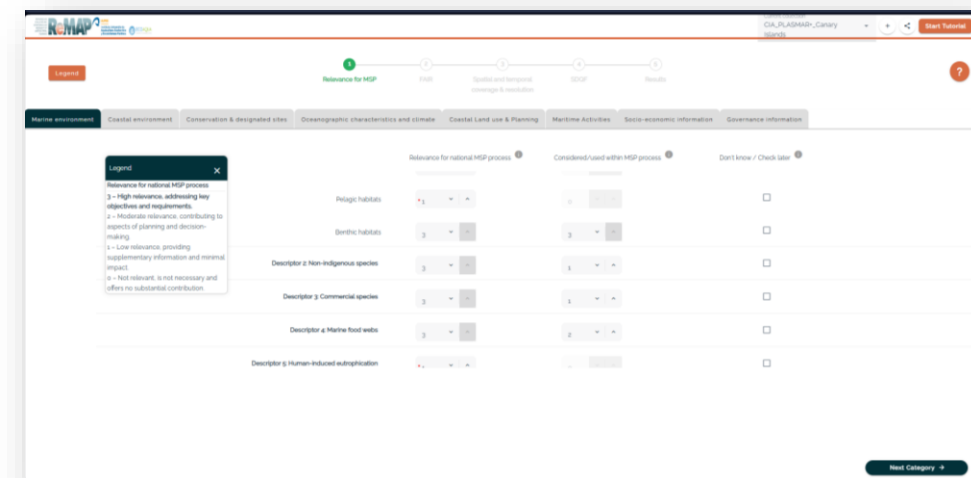
This module will conceptualize **exploratory analysis** on data that is considered and used for the development of the MSP plans. It will provide information **which data should be considered, what data is missing and should be applied in monitoring & evaluation, and in the next iteration of the MSP. It is not spatial analysis.**

- **Auto-assessment** (questionnaire) will be based on four data assessment topics:
 - Thematic relevance for MSP process;
 - Assessment of the **FAIR** principles;
 - Spatial & Temporal characteristics;
 - Data Quality and Accuracy.

The screenshot shows the user interface of the REMAP input data module. At the top left, there are logos for REMAP, HAPIC, and ECOAQUA. The top right corner displays the current collection as 'CIA_PLASMAR+_Canary Islands' with a dropdown arrow, a plus sign, a back arrow, and a 'Start Tutorial' button. Below the header is a progress indicator with five steps: 1. Relevance for MSP (highlighted in green), 2. FAIR, 3. Spatial and temporal coverage & resolution, 4. SDQF, and 5. Results. A 'Legend' button is on the left, and a question mark icon is on the right. At the bottom, there is a horizontal menu with eight categories: Marine environment (highlighted), Coastal environment, Conservation & designated sites, Oceanographic characteristics and climate, Coastal Land use & Planning, Maritime Activities, Socio-economic information, and Governance information.

Thematic relevance for MSP process:

- **Relevance for national MSP process:**
 - Use of dataset is highly relevant as significant for the MSP process (Highly relevant): 3
 - Data set could have impact on the MSP process (Moderately relevant): 2
 - Dataset could be considered, with potential minimum impact on the MSP process (Low relevance): 1
 - Dataset is not necessary to be considered within the MSP process (Not relevant): 0
- **Considered/used within MSP process:**
 - Considered and properly applied in the MSP process: 3
 - Considered and used, but not properly applied in the MSP process: 2
 - Considered, but not used: 1
 - Not considered in the MSP process: 0



Assessed FAIR data principles:

- adapted for the MSP and INPUT data module-

• Data is Findable:

- Data is described with metadata, that are registered, indexed and findable through international catalogues (e.g. INSPIRE; EU Open data portal, EMODnet...): 3
- Data is described with metadata, registered, indexed and findable through national or local catalogues: 2
- Data is described with metadata but not registered or indexed in searchable resource catalogues: 1
- Metadata do not exist and information is not discoverable (findable): 0

• Data is Accessible:

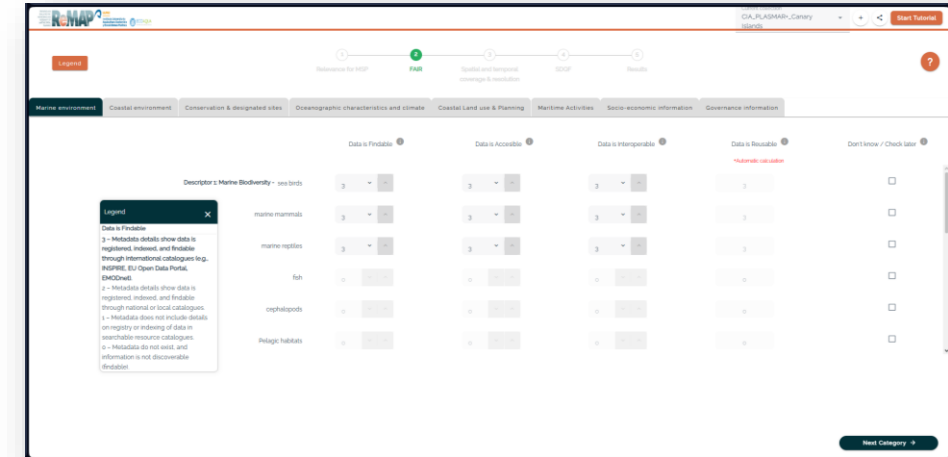
- Data is publicly accessible through open protocol: 3
- Data is accessible on demand, not through open protocol: 2
- Data is existing, locked and not available: 1
- Data not available: 0

• Data is Interoperable:

- Followed and harmonized data by international standards (e.g. INSPIRE, S-56, OGC...): 3
- Data set not harmonized, but applied international standardized semantics (e.g. EUNIS, EU-NOMEN, WORMS, INSPIRE code lists, IUCN protected areas categories, CORINE classes...): 2
- National standards applied: 1
- Not harmonized: 0

• Data is Reusable

- Reusability is assessed within the Relevance, assessing the Findability, Accessibility and Interoperability, and finally assessing Spatial & Temporal characteristics



SPATIAL & TEMPORAL CHARACTERISTICS:

- **Spatial coverage (extension) of the data set:**

- Complete spatial coverage of area relevant for MSP (e.g. coastal waters; or EEZ):3
- Partial coverage, not entirely adequate but relevant for MSP: 2
- Sporadic, not adequate for MSP: 1
- Not (available) spatial data component: 0

- **Spatial resolution of the data (level of details):**

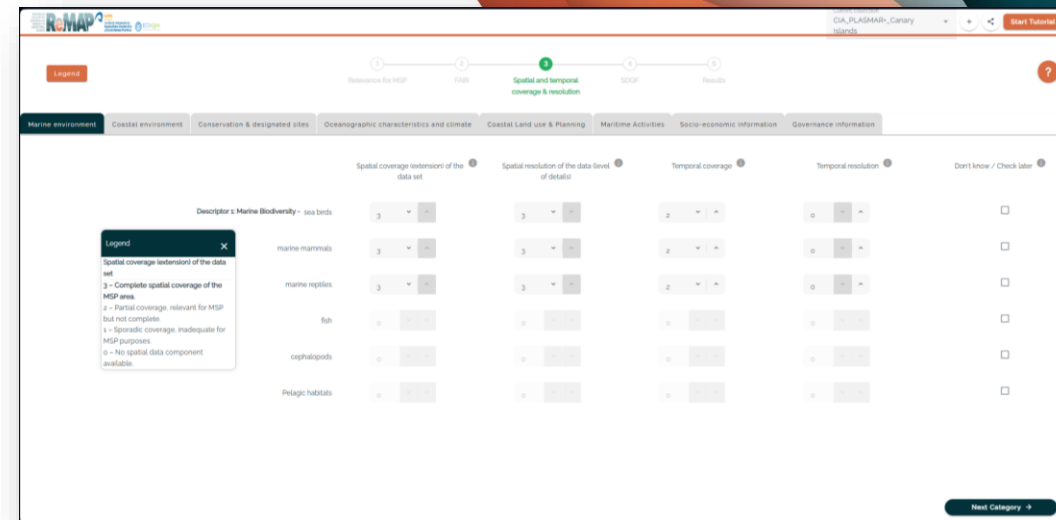
- Spatial resolution, adequate for MSP: 3
- Medium level, not entirely adequate but relevant for MSP process : 2
- Coarse, insufficient level for proper use in MSP process, but possible to apply: 1
- Inadequate spatial resolution for area of planning and MSP and difficult to apply for MSP: 0

- **Temporal coverage:**

- Time series are covering period before and after adopting the MSP:3
- Data set are covering recent period before adopting the MSP: 2
- Data set are covering time period after adopting the MSP:1
- Data set present out-dated information; data set do not presented reality for the period required for the MSP: 0

- **Temporal resolution:**

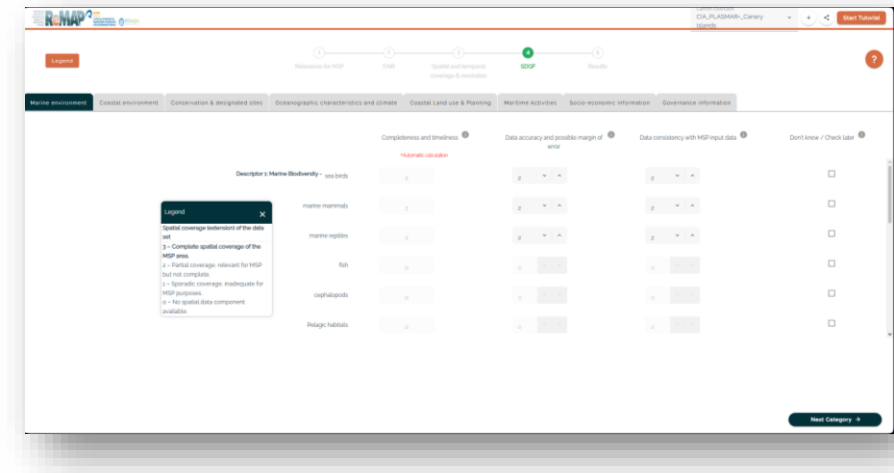
- Time series obtained by frequent monitoring, with adequate frequency for MSP process: 3
- Partial, not entirely adequate but relevant for MSP process: 2
- Sporadic time series, not adequate for MSP: 1
- Time series not available: 0



DATA QUALITY AND ACCURACY (based on SDQF):

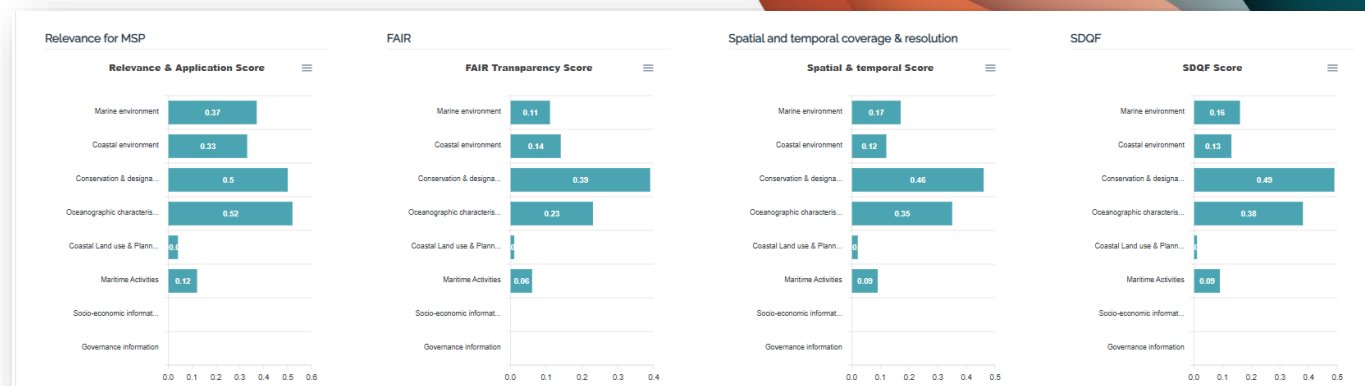
Spatial Data Quality Framework, that assess completeness, accuracy, consistency, timeliness, and lineage - adapted for the INPUT data module:

- **Completeness and timeliness assessed with spatial & temporal characteristics.**
- **Data accuracy and possible margin of error:**
 - High accuracy data, obtained by monitoring, observations or survey: 3
 - Medium accuracy data, obtained by modelling: 2
 - Low accuracy data (e.g obtained by proxy): 1
 - Accuracy information not available and difficult to assess: 0
- **Data consistency with MSP input data:**
 - High consistency – data has a logical uniformity with other spatial data used in the MSP process: 3
 - Medium consistency – data presents minor discrepancies with some spatial data used in the MSP process: 2
 - Low consistency - data presents significant contradictions with spatial data used in the MSP process : 1
 - Inconsistent data with spatial data used in the MSP process , or consistency can not be assessed: 0



Input data module analytics output

- Results of module are **not spatial data product**;
- **Report on data collection used for the MSP process**; what are the data gaps, and how current data can be updated regarding the quality, coverage, resolution, etc...
- Overview of data collection - set of indexes, charts that provide assessment on MSP data collection;
- Including information for entire data collection and for the each MSPdF cluster:
 - **Relevance & Application score**;
 - **FAIR Transparency score**;
 - **Spatial & Temporal coverage score**;
 - **SDQF score**.
- List of **data that has been used** in MSP process
- List of **data that is relevant but not available** for MSP process – what data is missing – survey, modeling, proxy



Relevant for MSP, but not used, as not available

Poland_Profile_modJP_report

Descriptor 2: Non-indigenous species - Non-indigenous species
Descriptor 5: Human-induced eutrophication - Human-induced eutrophication
Descriptor 6: Sea-floor integrity - Sea floor integrity
Physics - Optical properties
Physics - Sea level

Relevant for MSP, not used, but available

Poland_Profile_modJP_report

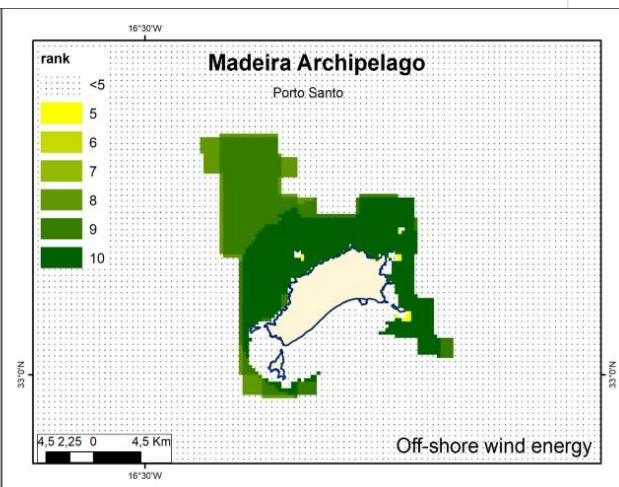
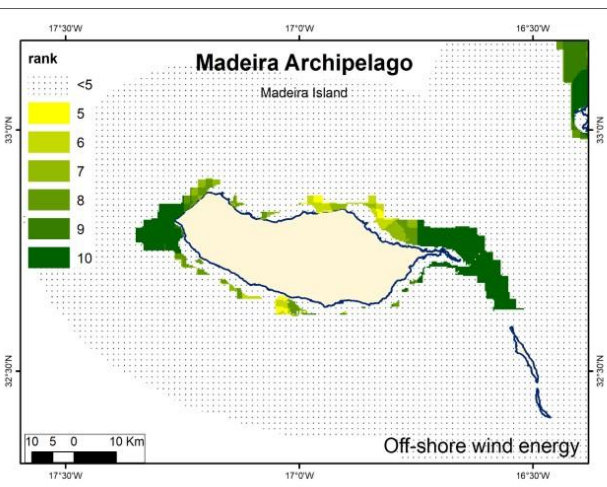
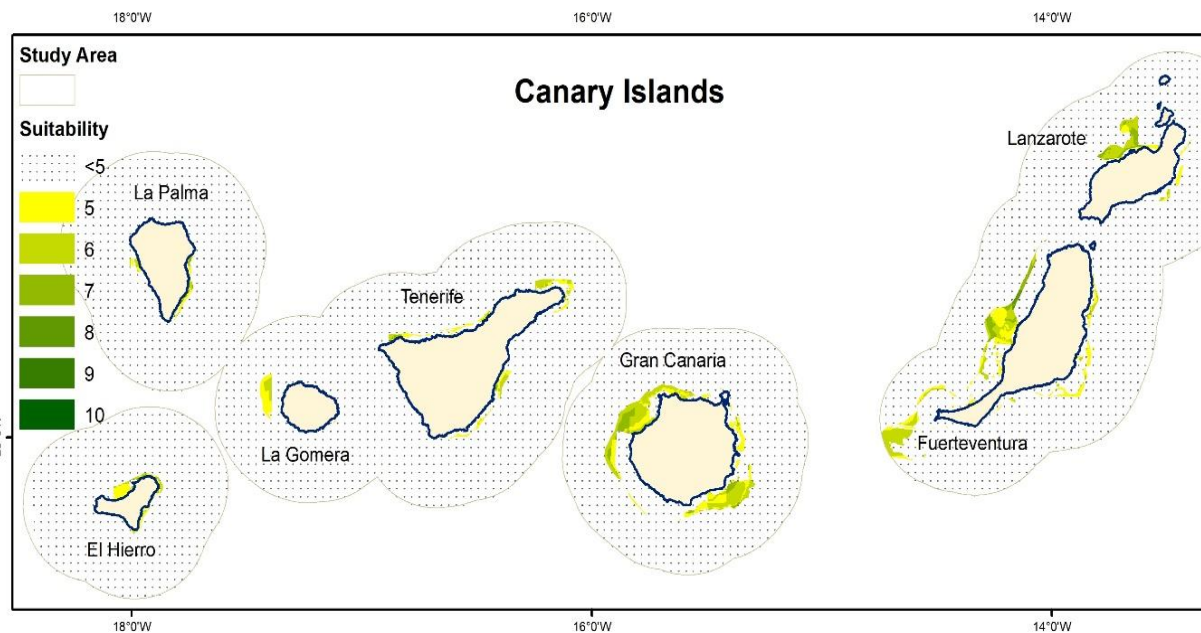
Physics - Water Temperature
Physics - Water Salinity

Relevant for MSP, but not findable

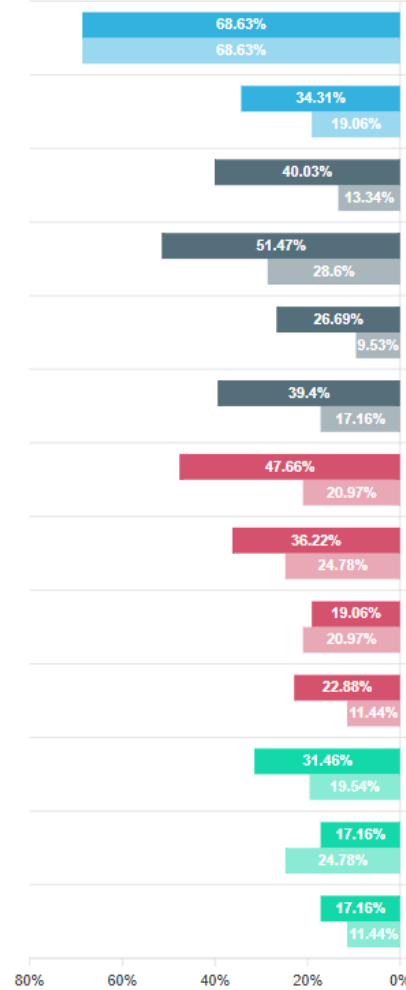
Poland_Profile_modJP_report

Descriptor 1: Marine Biodiversity - sea birds
Descriptor 1: Marine Biodiversity - marine mammals
Descriptor 2: Non-indigenous species - Non-indigenous species
Descriptor 5: Human-induced eutrophication - Human-induced eutrophication
Descriptor 6: Sea-floor integrity - Sea floor integrity

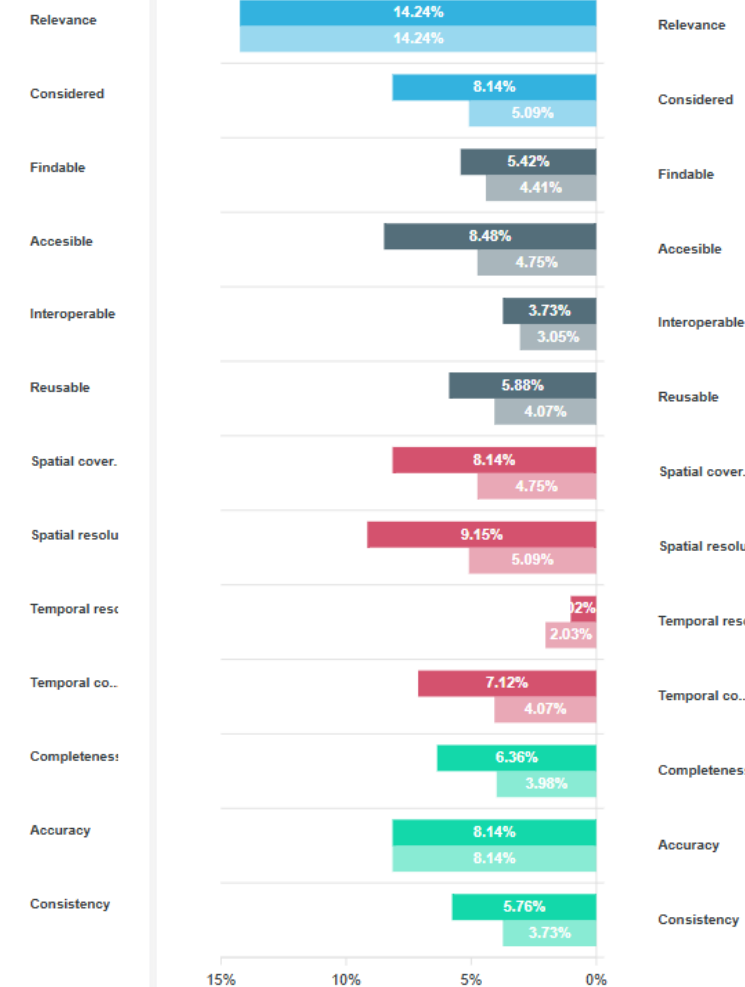
Assessment of the results of the suitability analysis for the Offshore wind energy



Marine environment



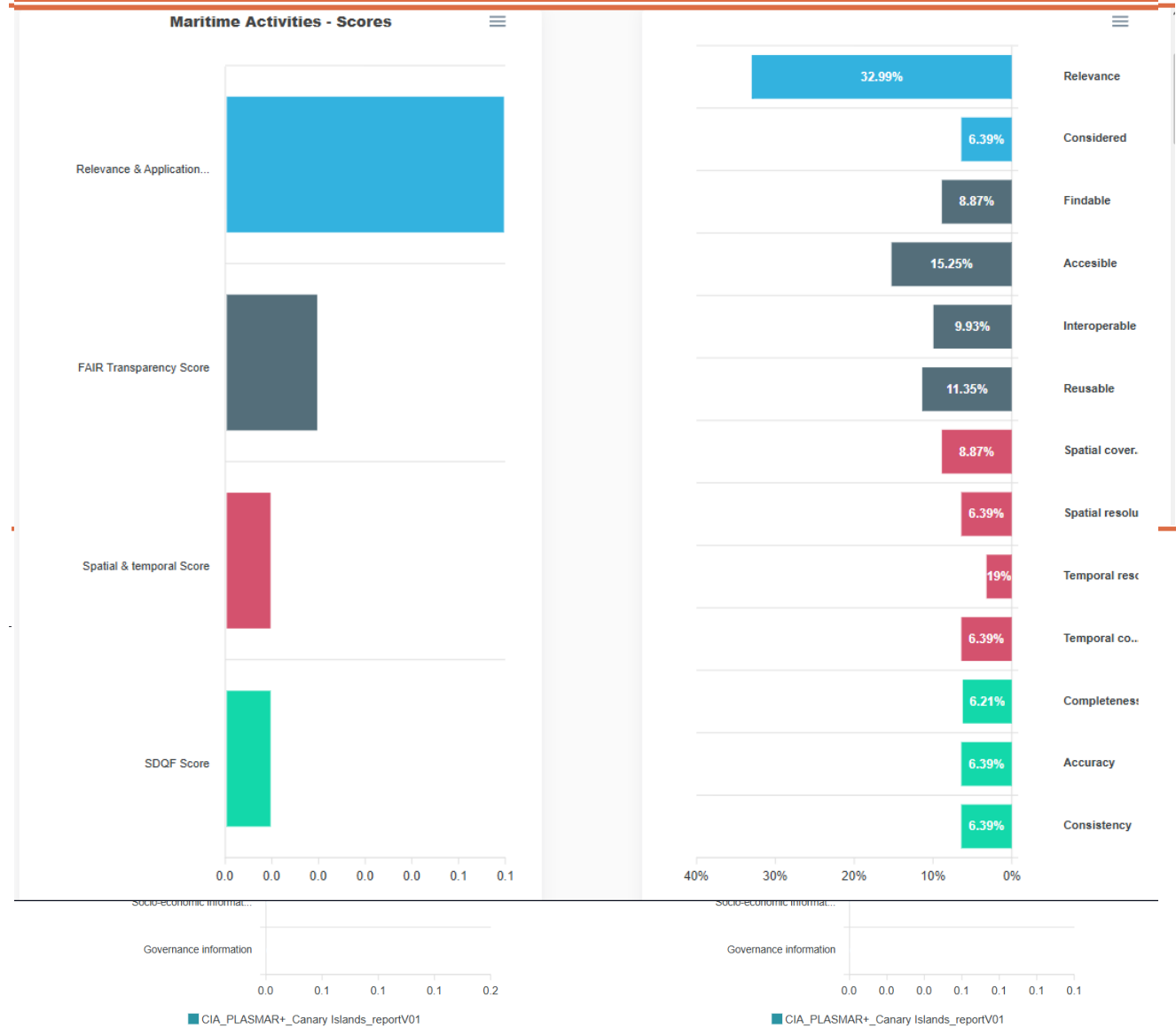
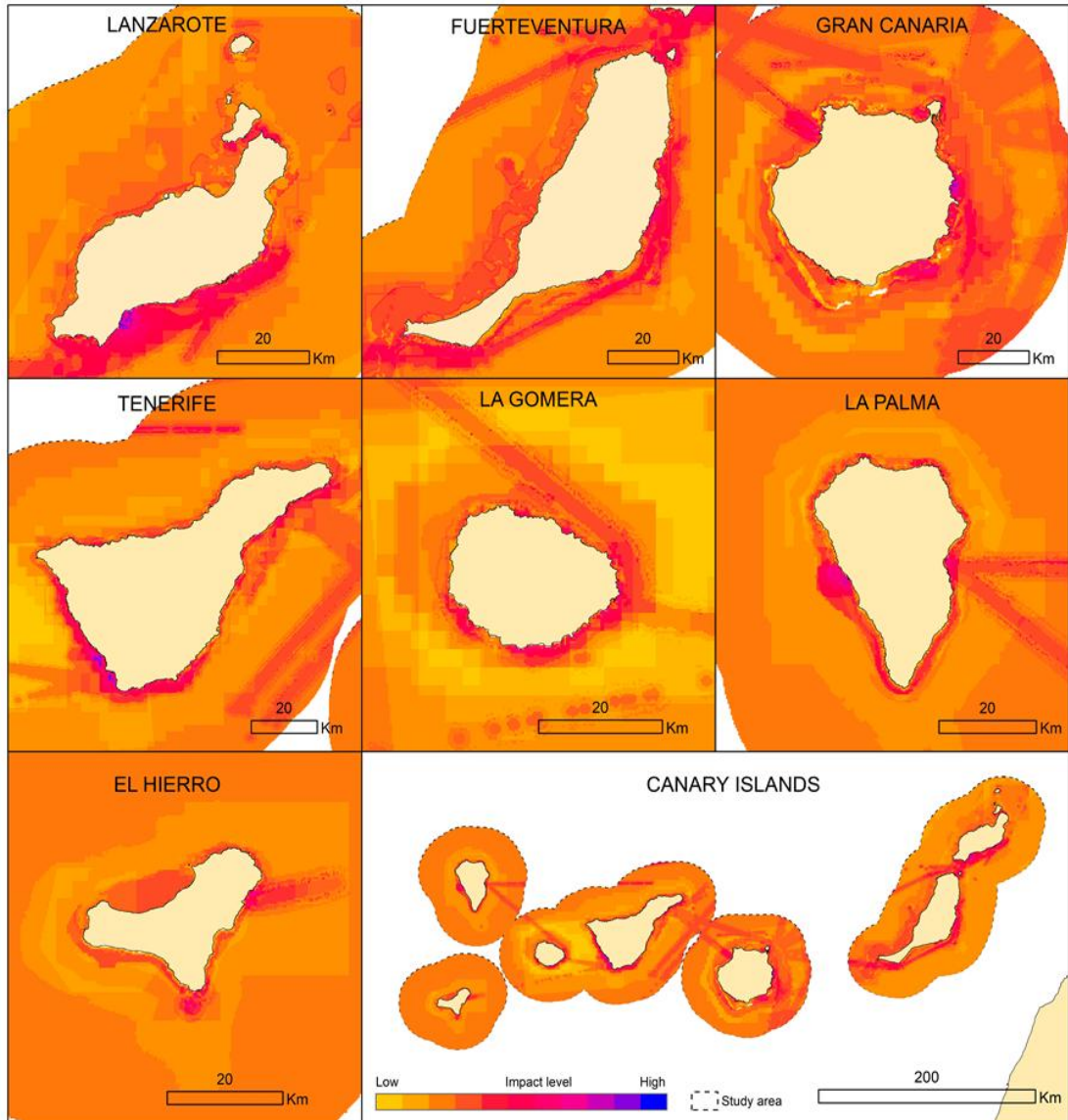
Operative maritime activities



Co-funded by
the European Union

Cumulative Impact Assessment

Fisheries, maritime transport, aquaculture and offshore wind

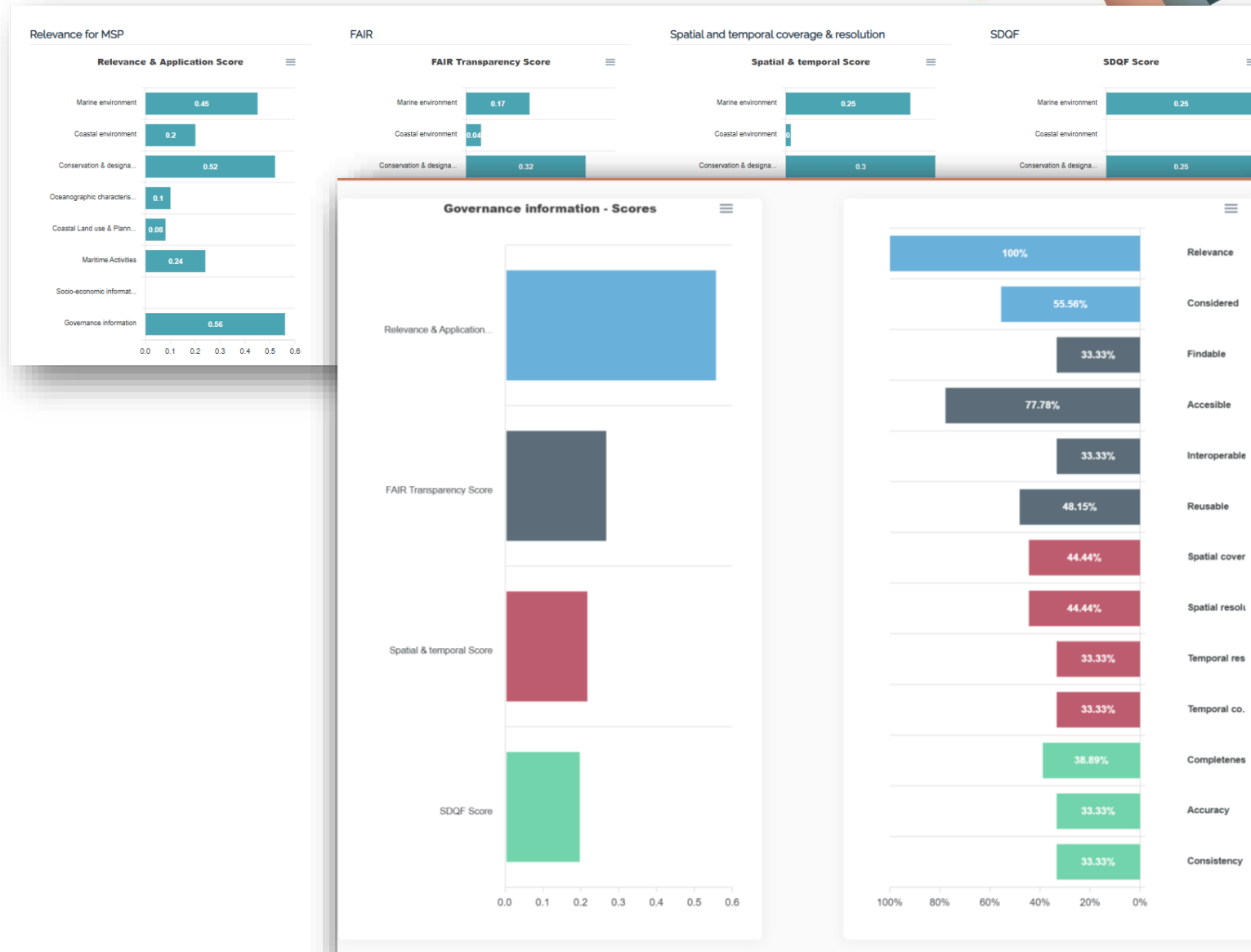


Analysis of MSP data & plan

- Can be developed on the local, national or regional level – robust model and can be applied on any scale

Report on MSP data collection:

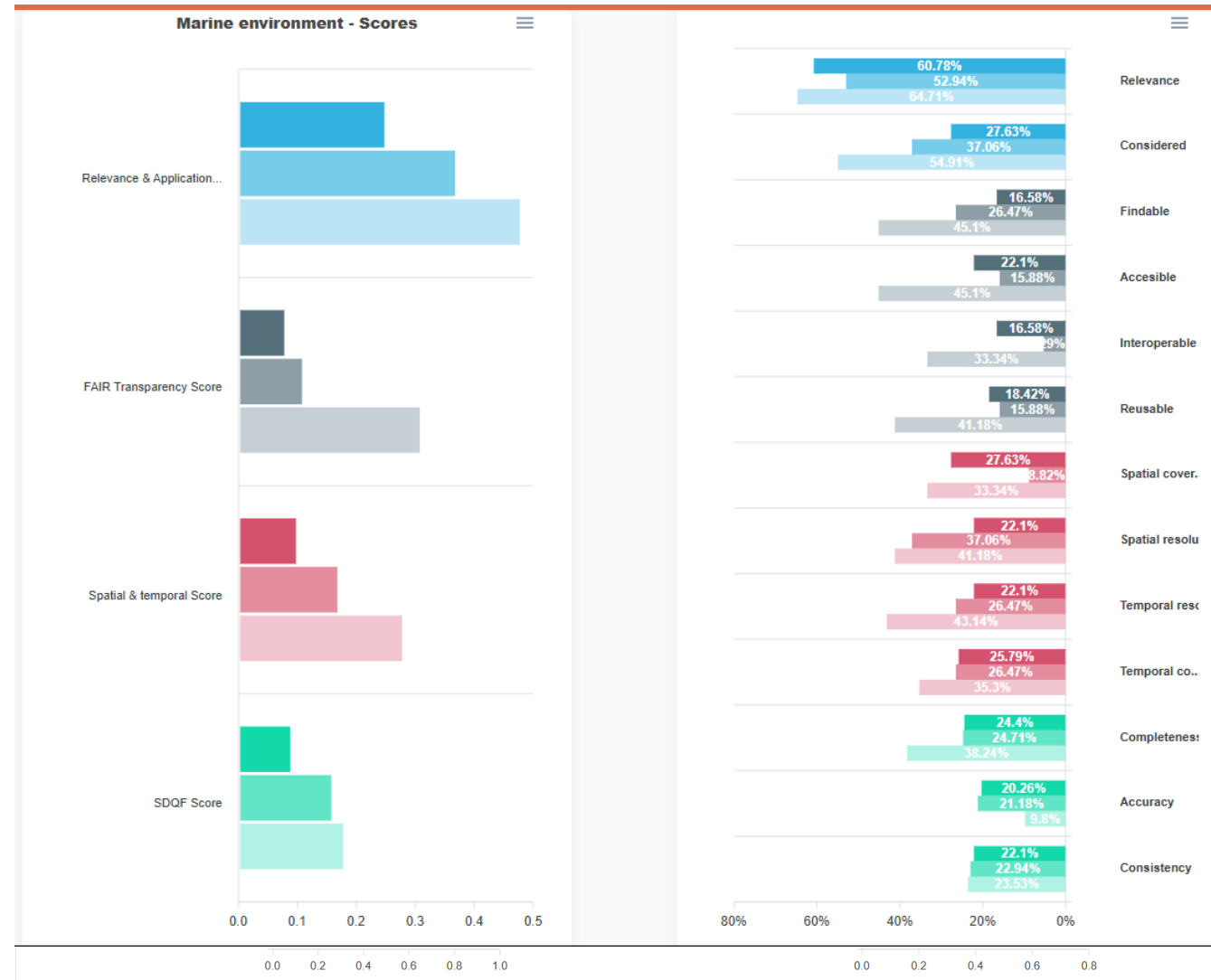
- Identification of data gaps, missing information, and underrepresented topics.
- What data/parameters should be obtained – Design of monitoring, modelling process, survey...
- How do data gaps, limited coverage, or low-quality datasets affect MSP outputs?



Can we understand how Input data gaps, incompleteness or low quality can affect (any) MSP? ? ?

MSP Input data – MSP process- MSP

- Standardized approach based on the MSPdF allows comparing the MSP data collections
- Potential research – **To understand relationship between MSP input data and planning outputs**, using harmonized MSP plans available through EMODnet (results obtained with **ReMAP Output data module**).
- *Can harmonized MSP plans and MSP data collections be systematically compared across Europe?*

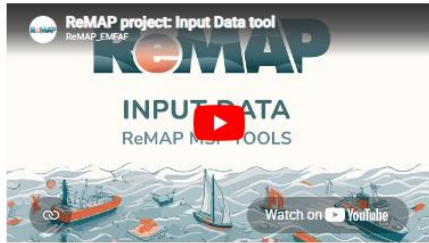


Applications of the Input data module

- **Structured MSP data collection** based on the MSPdF clusters and checklists;
- **Assessment of MSP input data collections** used in planning, zoning, site selection, CIA, SEA and other MSP multi-parameter analyses.
- **Assessment of uncertainty and robustness** of MSP analytical outputs resulting from data limitations.
- **Identification of data gaps**, missing information, and datasets not considered in the planning process.
- **Evaluation of data adequacy** through relevance, FAIR transparency, spatial and temporal coverage, and data quality assessment.
- **Prioritization of future data acquisition**, monitoring programmes, surveys, and modelling activities.
- **Support for iterative MSP processes**, enabling assessment of changes in data collections between successive MSP revisions.
- **Support for MSP Monitoring & Evaluation (M&E)** by tracking improvements in data availability, quality, and interoperability.
- **Comparison of MSP data collections** with standardized method across regions, countries, planning cycles, and analytical methodologies.
- **Research on the relationship between MSP input data and planning outputs**, using harmonized MSP plans available through EMODnet and results obtained with **ReMAP Output data module**.

REVIEWING AND
EVALUATING THE
MONITORING AND
ASSESSMENT OF
MARITIME SPATIAL
PLANNING

ReMAP



TOOL



MODULE ANALYTICS



INPUT DATA



AT A GLANCE



INSTRUCTIONS

ReMAP

*Thanks | Gracias | Grazie | Merci
| Obrigado | Hvala | Kiitos | Ačiū*

<https://remap.cetmar.org>



**Co-funded by
the European Union**

*This project has received funding from the European Maritime, Fisheries and Aquaculture Fund (EMFAF) under Grant Agreement No 101081304.
This presentation reflects only the authors' view and the Commission is not responsible for any use that may be made of the information it contains.*