

# Maritime Spatial Planning Through the Years: Insights of a Decade of EMFF and EMFAF Funded Projects

*September 17, 2024*

*Cristina Cervera-Núñez, Christina Christoforou-Livani*

*Assistance Mechanism Maritime Spatial Planning*

# Objectives of the analysis

- ❖ Reflect on the **evolution of the MSP** process over the last almost 10 years,
- ❖ Understand the **achievements** of the projects and the European MSP community,
- ❖ Identify **challenges** (evolving, persistent, emerging),
- ❖ Shed light on **best practices, applied solutions and recommendations** (operational, strategic)
- ❖ **Learn** from one another,
- ❖ **Strengthen our future work together!**



## Maritime Spatial Planning Through the Years: Insights of a Decade of EMFF and EMFAF Funded Projects

### Background Technical Study

JULY 2024

European Maritime, Aquaculture and Fisheries Fund (EMFAF)



sml



cofad

# Methodology

**32 projects reviewed**  
26 completed  
6 ongoing



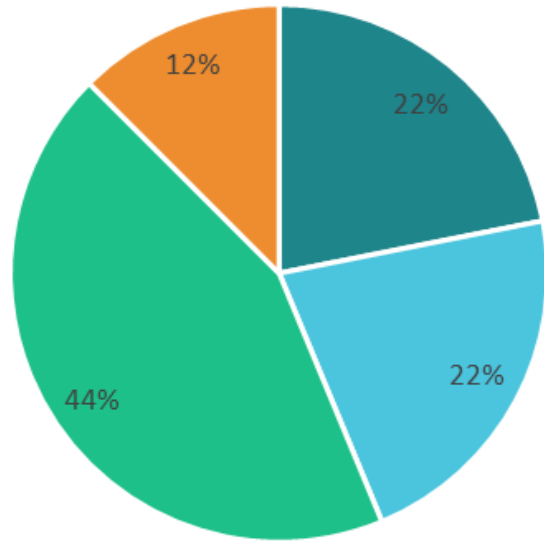
Powered by Bing  
© GeoNames, Microsoft, Open Places, OpenStreetMap, TomTom

- 26 completed projects under the EMFF programme (2014-2020)
- 6 projects launched since 2021 under the EMFAF programme (2021-2027)
- 262 reports reviewed

- Source: European MSP Platform and project websites for ongoing projects,
- **Identification of challenges and recommendations** (qualitative analysis, keyword-based, interviews, validation workshop, feedback from the MSEG),
- **Three level** of categories of challenges and lessons learnt (thesaurus creation),
- **Aggregation of results** to identify trends at a European and sea basin level,
- **Geographical experts of the AM MSP** involvement to ensure the identification of key challenges at the sea basin level.

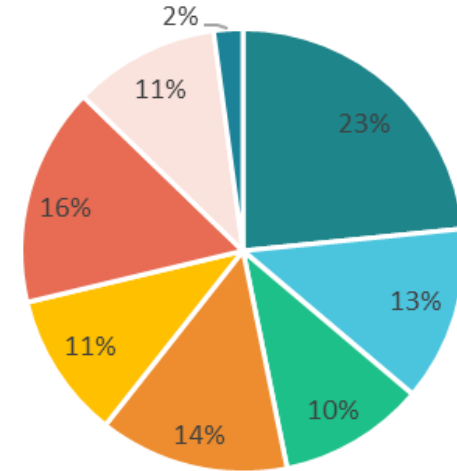
# Overall statistics

Geographical scope of the EMFF/EMFAF projects since 2014



■ Regional ■ pan-European ■ Sea-Basin ■ National

Projects processed - sea basin activity analysis

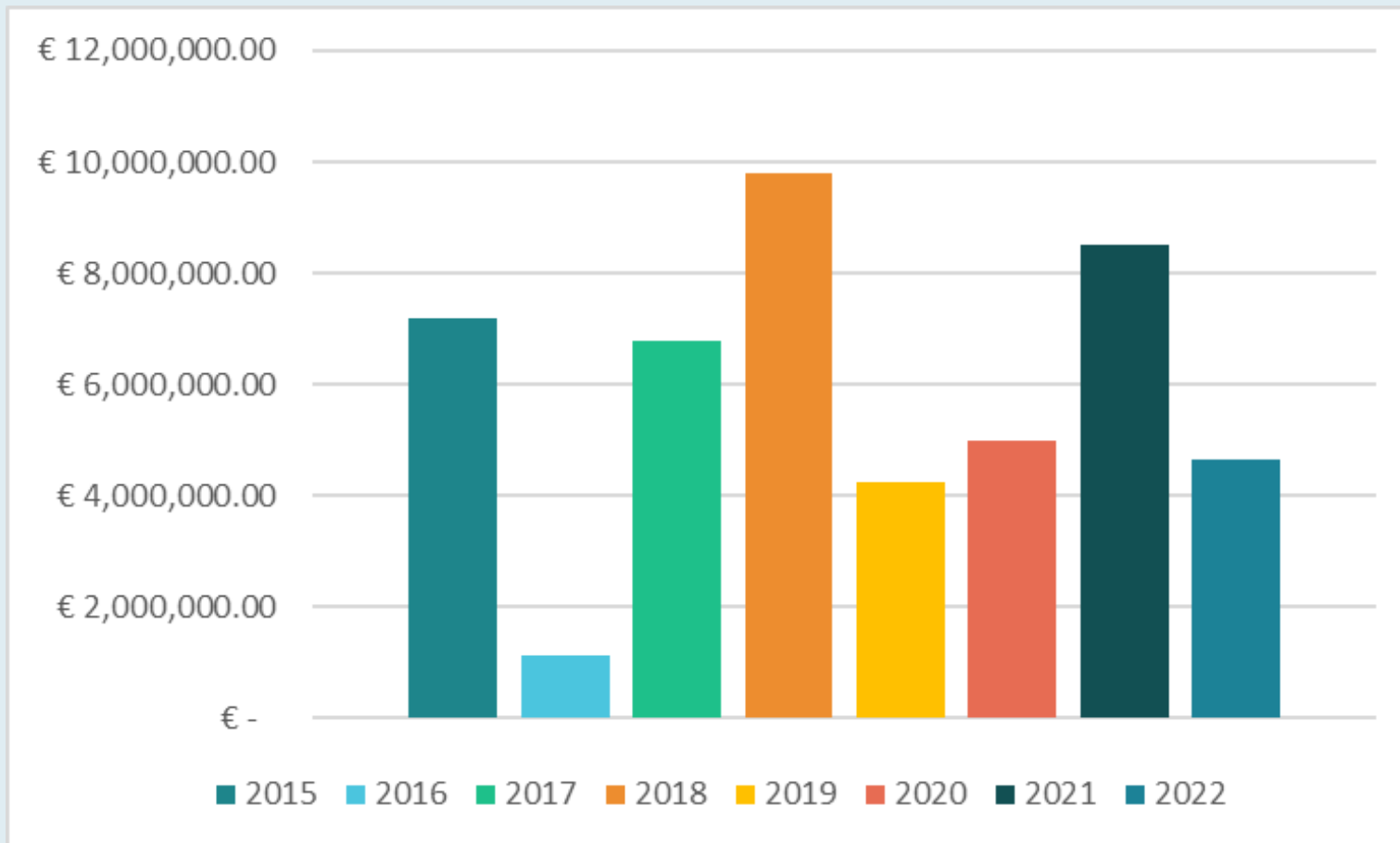


■ Atlantic ■ Baltic Sea ■ Black Sea  
 ■ East Mediterranean ■ North Sea ■ West Mediterranean  
 ■ Outermost regions ■ Global

- **Regional:** when a project takes place in multiple countries across different sea basins,
- **pan-European** when the geographical scope of the project is across all the EU MSs,
- **Sea basin:** the projects that have a focus on a specific sea basin and are implemented in more than one of the relevant countries.

# Overall statistics

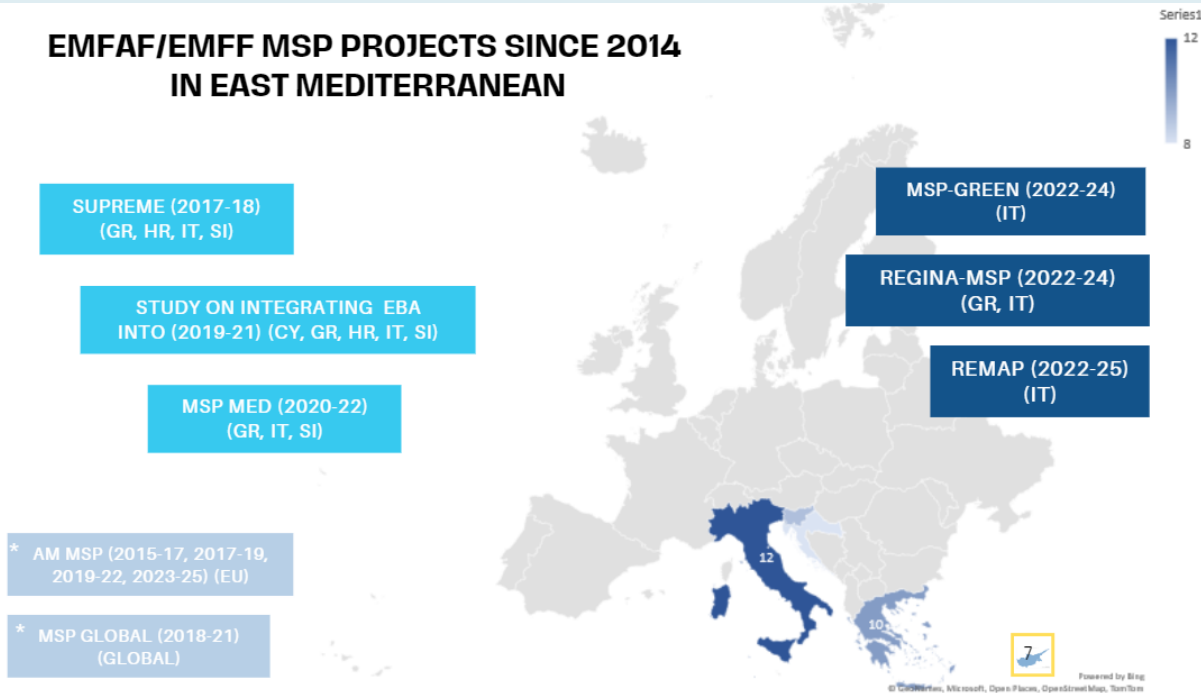
## Total Expenditure on MSP-Related projects funded per year of project commencement



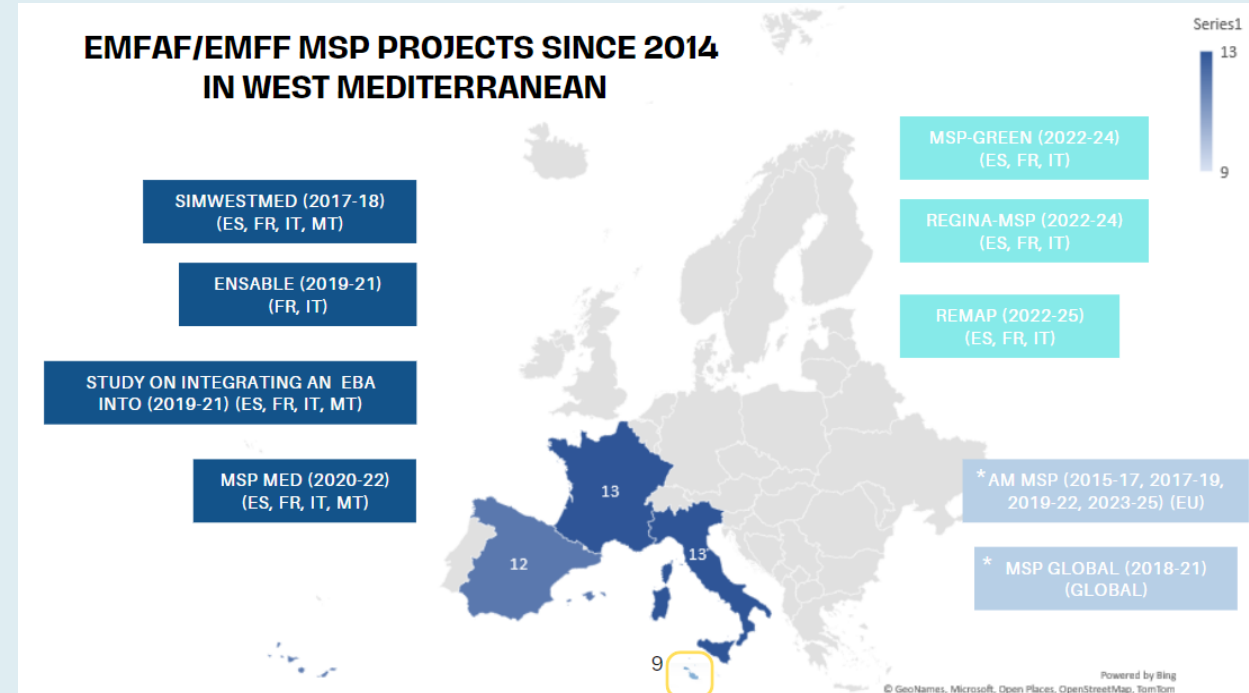
EC contribution is 80%  
Total EC contribution=  
€41,918,231.54

# Sea-basin analysis: Mediterranean

## EMFAF/EMFF MSP PROJECTS SINCE 2014 IN EAST MEDITERRANEAN



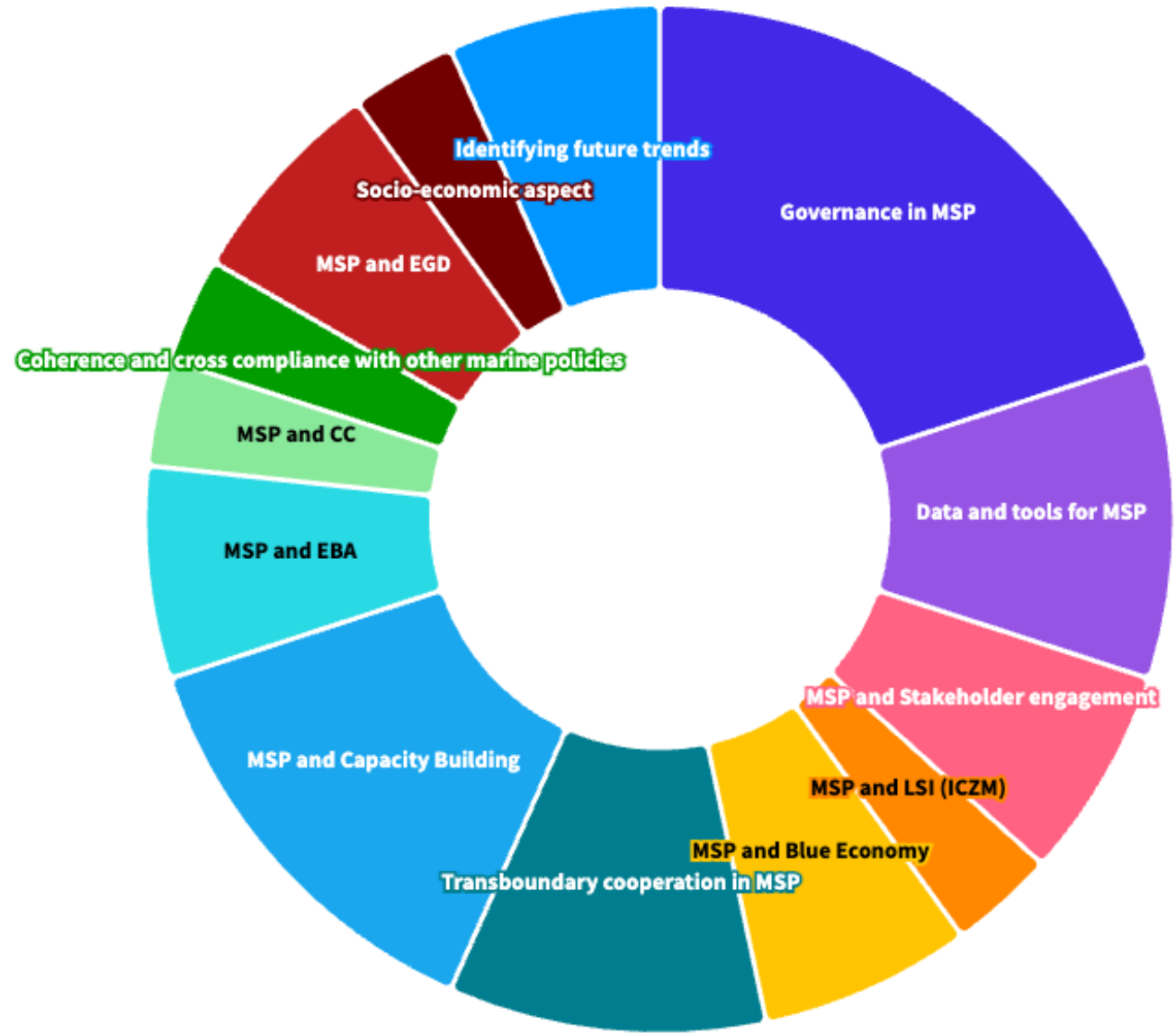
## EMFAF/EMFF MSP PROJECTS SINCE 2014 IN WEST MEDITERRANEAN



# Sea-basin analysis: Mediterranean (East and West MED)

## Objectives

- Moving from more generalist generation of projects to a more focused approach, targeting specific elements of the MSP process with greater precision,
- New challenges appear.



# A long list of achievements

- ✓ **Improved understanding**; marine environment, cumulative effects, future trends and spatial demands.
- ✓ **Promoted data coherence**, addressed gaps, and advocated for **data sharing**.
- ✓ Focused on **integrating the EBA into MSP**, advocated for balancing economic growth activities and aimed to increase MPAs by 2030.
- ✓ Developed **evaluation criteria** and indicators to assess MSP process.
- ✓ Enhanced **transboundary strategies** by facilitating cross-border collaboration, data exchange, dialogue, and addressing concerns while fostering synergies and providing concrete solutions for transboundary challenges.
- ✓ **Engaged stakeholders** through capacity-building activities, workshops, among other engagement activities.
- ✓ **Supported Member States** in implementing the EU MSP Directive, coordinating activities and operationalising their MSP plans.
- ✓ Promoted **governance coherence**.
- ✓ **LSI into MSP process**: methodological approach to perform LSI analysis within an MSP process.

**...and the list goes on!**

# Key challenges addressed

European scale

8-level A, 39 level-B, 68 level-C

- **Recurrent / persistent challenges**
- **Evolved challenges**
- **Emerged challenges**

# Key challenges addressed

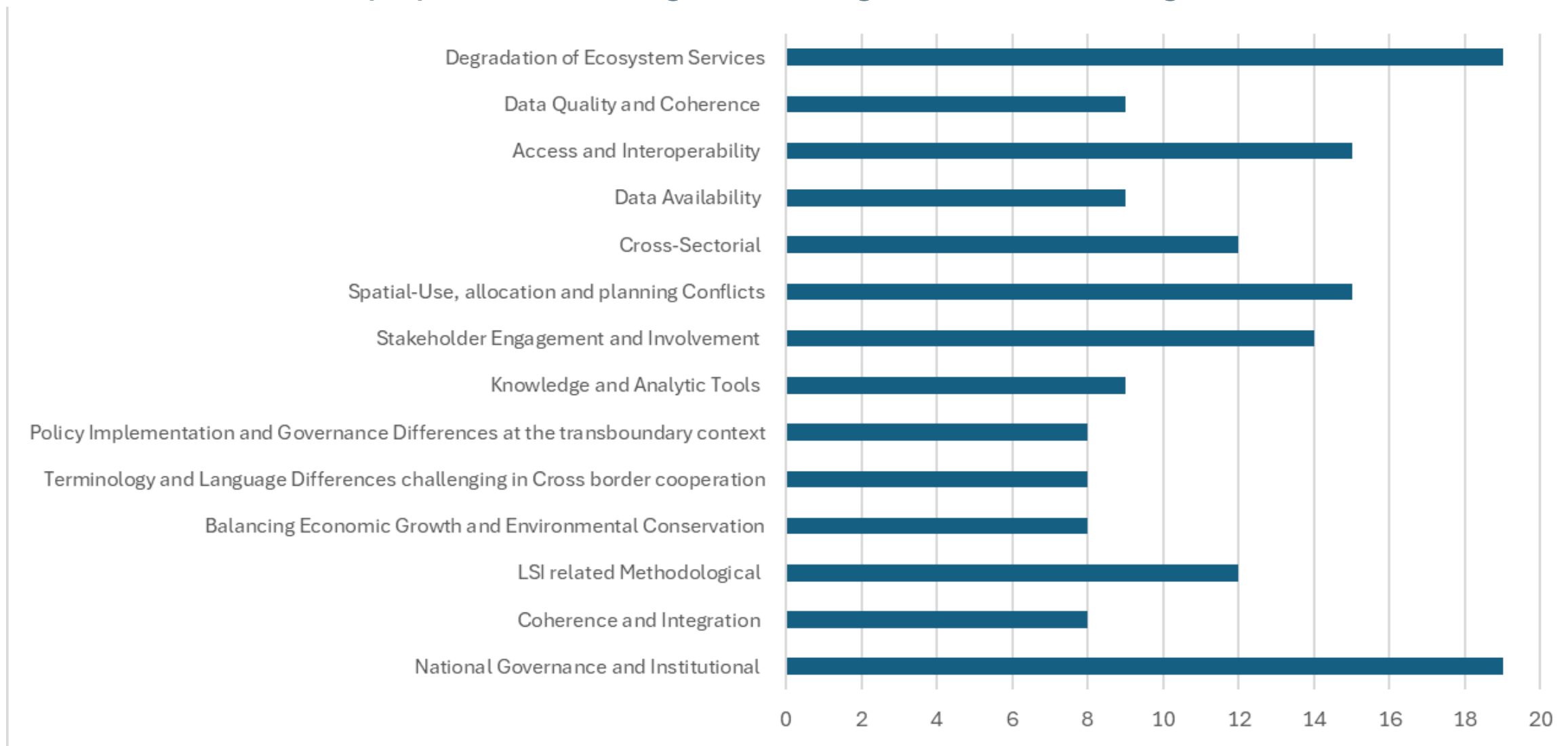
European scale

8-level A, 39 level-B, 68 level-C

- **Data**
- **Governance and Policy issues**
- **Land-sea interactions (LSI) (ICZM)**
- **Ecosystem and biodiversity conservation**
- **Cross-border cooperation**
- **Multi-use**
- **Cross-sectoral coordination**
- **Capacity, Resources and Stakeholder engagement**

# “Recurrent” challenges addressed

The 14 most popular challenges among the 39 challenges addressed





European  
MSP Platform

**EUROPEAN  
BLUE FORUM**

# Key challenges addressed Mediterranean Sea



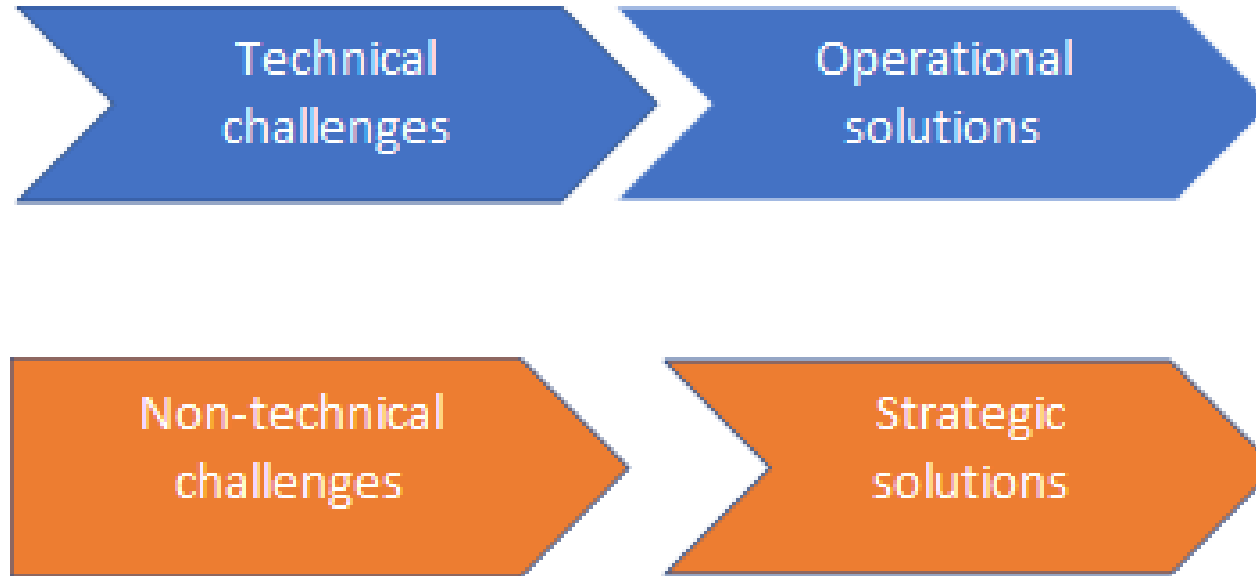
# Persistent challenges – Mediterranean Sea

- **Ecosystem and biodiversity conservation:**
  - degradation of ecosystem services (loss of biodiversity, pollution etc),
  - challenges applying EBA,
- **Monitoring and evaluation:** lack of monitoring systems,
- **Multi-use:**
  - difficulties identifying conflicts/synergies,
  - spatial-use and allocation conflicts
- **Data:**
  - lack of data on socio-economic aspects
  - access and quality issues,
  - privacy and security challenges,
- **Cross-sectoral challenges:** cross-sectoral coordination and emerging sectors development,
- **LSI:**
  - “no-one-size fits all”
  - ICZM challenges,
  - Alignment issues at Land/Sea interface challenges,
  - Data integration and processing
- **Cross-border cooperation:**
  - Policy differences and varied approaches & timing, tools, and legislative variances,
  - Lack of transboundary collaboration and alignment of targets & geopolitical conflicts,
  - Ambiguity in terminology and language differences
- **Stakeholder engagement:**
  - varied engagement approaches,
  - lack of resources to engage stakeholders & fatigue,
- **Capacity and Resources:** lack of financial resources

# Emerging challenges - Mediterranean Sea

- **Governance and policy:**
  - Adaptive management,
  - Understanding the impacts of CC; knowledge gaps,
  - Challenges related to national plan implementation,
- **Ecosystem and biodiversity:** balancing human activities and ecosystem conservation planning,
- **Multi-use:**
  - Conflict identification and management,
  - Coherent development and compatibility,
  - Spatial-Use, allocation and planning conflicts,
- **Data:**
  - data compatibility challenges,
- **Socio-economic dimension:**
  - Understanding long-term socio-economic changes and assessing economic outcomes,
  - Coupling integrated assessment with socioeconomic analysis,
  - Data challenges,
- **Monitoring and evaluation:** operationalising monitoring.

# What kind of solutions can projects provide to MSP challenges?





# Key recommendations Mediterranean Sea

\*The magnitude is contingent upon the number of projects that made recommendations for each topic



## Key take-aways of the study

- Projects provided tangible and intangible results,
- Direct engagement of CAs is crucial at achieving targets/solutions that cannot be reached by the projects alone,
- MSP is instrumental in fostering collaboration,
- Projects are catalysts for collaboration not only among different countries but also at national context encouraging CAs to adopt projects' outcomes,
- Important to enhance policy uptake,
- Long-term focus of ocean literacy and raising awareness,
- Climate Change necessitates working together and enhancing adaptability of plans,
- Different realities among countries and sea basins,
- Learn from each other.

## Do you have a question about MSP? Contact Points and Experts

Send it to [info@msp-platform.eu](mailto:info@msp-platform.eu) or make use of our 48h Question & Answer Service. Your question will be forwarded to one of the Sea Basin Focal Points.

We are happy to assist you with any support or questions you may have, such as disseminating information on an MSP event or publication, or searching for relevant information and contacts in order to address your needs.

### Central Office

- **Chris McDougall**, Project Leader
- **Thanos Smanis**, Expert Coordinator
- **Christina Christoforou-Livani**, Project Manager

[info@maritime-spatial-planning.ec.europa.eu](mailto:info@maritime-spatial-planning.ec.europa.eu)

### Consortium



**sml**

**cofad**

Finland **Kristina**  
Poland **Veidemane**  
Latvia  
Lithuania  
Estonia  
Germany  
Sweden  
Denmark

[balticsea@maritime-spatial-planning.ec.europa.eu](mailto:balticsea@maritime-spatial-planning.ec.europa.eu)

Germany **Patrycja**  
Belgium **Enet**  
Netherlands  
United Kingdom  
Denmark

[northsea@maritime-spatial-planning.ec.europa.eu](mailto:northsea@maritime-spatial-planning.ec.europa.eu)

Bulgaria **Natasa**  
Romania **Vaidanou**

[blacksea@maritime-spatial-planning.ec.europa.eu](mailto:blacksea@maritime-spatial-planning.ec.europa.eu)

Ireland **Frederick**  
France **Herpers**  
Spain  
United Kingdom  
Portugal

[atlantic@maritime-spatial-planning.ec.europa.eu](mailto:atlantic@maritime-spatial-planning.ec.europa.eu)

France **Marta**  
Spain **Pascual**  
Malta  
Italy

[westmed@maritime-spatial-planning.ec.europa.eu](mailto:westmed@maritime-spatial-planning.ec.europa.eu)

Slovenia **Stella**  
Croatia **Kyvelou**  
Greece  
Cyprus

[eastmed@maritime-spatial-planning.ec.europa.eu](mailto:eastmed@maritime-spatial-planning.ec.europa.eu)

Outermost **Ricardo Jesus**  
regions **Haroun Tabraue**

[outermost@maritime-spatial-planning.ec.europa.eu](mailto:outermost@maritime-spatial-planning.ec.europa.eu)

## Team

- Brussels Office
- Sea basin help-desks:
  - Baltic Sea
  - North Sea
  - Atlantic Ocean
  - East Med
  - West Med
  - Black Sea
  - Outermost regions

**EUROPEAN**  
BLUE FORUM

