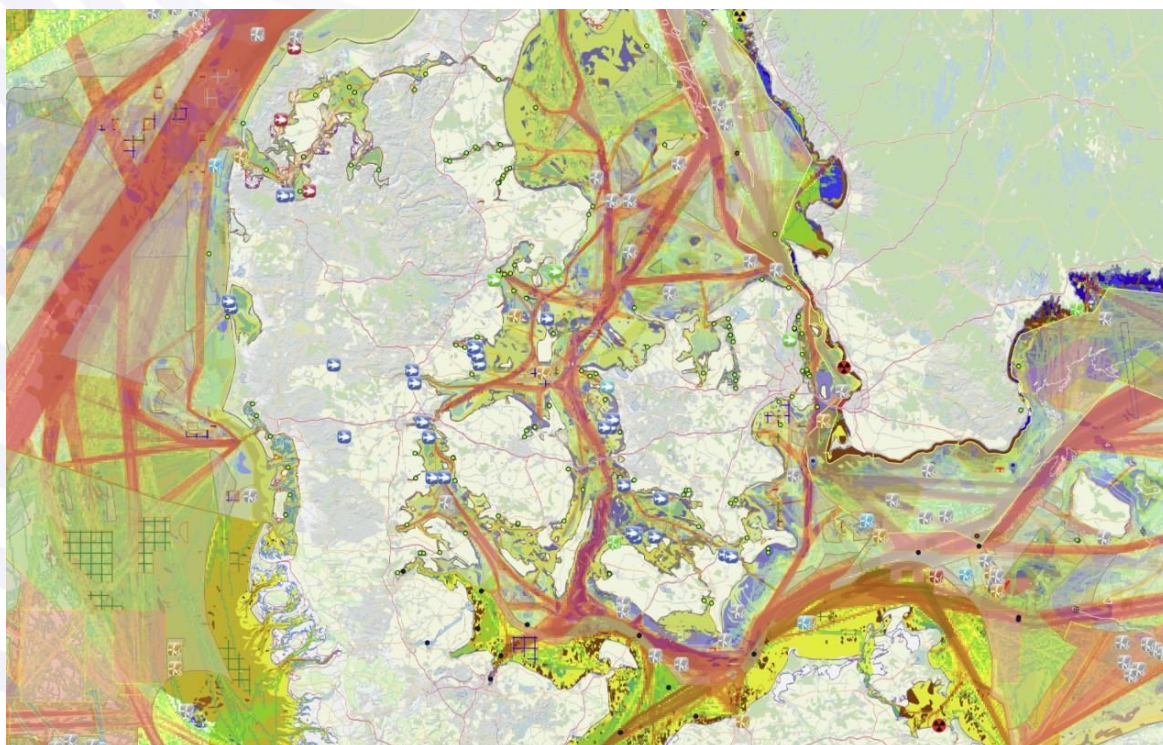


# **Analysing the state of current practices and synergies in data usage between the Maritime Spatial Planning Directive and the Marine Strategy Framework Directive**

**Preliminary survey results**



Menegon, S., Gusatu, L., Sarretta, A., Mulazzani, A., Fadini, A., Abramic, A., M., Campillos-Llanos, M., Cervera-Nuñez, C., Gomez-Ballesteros, Borst, K., Kaitaranta, J., Lux, M., Suzanne, J.B., Souf, A.

March – 2024



## **EUROPEAN COMMISSION**

European Climate, Infrastructure and Environment Executive Agency  
Unit D.3.1 – Sustainable Blue Economy

*Contact: CINEA EMFAF CONTRACTS*

*E-mail: [cinea-emfaf-contracts@ec.europa.eu](mailto:cinea-emfaf-contracts@ec.europa.eu)*

*European Commission  
B-1049 Brussels*



This document is part of the Updated Joint Roadmap to accelerate Marine/Maritime Spatial Planning processes worldwide – MSP roadmap (2022–2027) of the Directorate-General for Maritime Affairs and Fisheries of the European Commission (DG MARE) and the Intergovernmental Oceanographic Commission of UNESCO (IOC-UNESCO). The study implements the Roadmap’s action I “Data for MSP”, which is part of its priority area 1 on Knowledge support.



## **Analysing the state of current practices and synergies in data usage between the Maritime Spatial Planning Directive and the Marine Strategy Framework Directive**

Preliminary survey results

**Produced by the Technical Expert Group (TEG) on Data for MSP**

Written by

Stefano Menegon<sup>1</sup>, Laura Gusatu<sup>1</sup>, Alessandro Sarretta<sup>2</sup>, Alessandro Mulazzani<sup>1</sup>, Amedeo Fadini<sup>1</sup>, Andrej Abramic<sup>3</sup>, Monica Campillos-Llanos<sup>4</sup>, Cristina Cervera-Nuñez<sup>4</sup>, Maria Gomez-Ballesteros<sup>4</sup>, Kees Borst<sup>5</sup>, Joni Kaitaranta<sup>6</sup>, Muriel Lux<sup>8</sup>, Jean-Baptiste Suzanne<sup>9</sup>, Adeline Souf<sup>9</sup>.

1 National Research Council, Institute of Marine Sciences (CNR-ISMAR)

2 National Research Council, Research Institute for Geo-Hydrological Protection, (CNR-IRPI)

3 University Institute for Research in Sustainable Aquaculture and Marine Ecosystems. University of Las Palmas de Gran Canaria

4 Spanish Institute of Oceanography (IEO, CSIC)

5 Rijkswaterstaat (Dutch Ministry of Infrastructure and Water Management)

6 Baltic Marine Environment Protection Commission (HELCOM)

8 Mercator Ocean International

9 French Hydrographic and Oceanographic Service (SHOM)

Edited by: Chris Mcdougall, Project Leader, MSP Assistance Mechanism

This document was produced by the [Technical Expert Group \(TEG\) on Data for MSP](#), chaired by Joni Kaitaranta from the Baltic Marine Environment Protection Commission (HELCOM) and Andrej Abramic from the ECOAQUA Institute of the University Las Palmas de Gran Canaria. The TEG is directly supported by CINEA represented by Anja Detant, DG MARE represented by Celine Frank and the MSP Assistance Mechanism represented by Chris McDougall.

How to cite this document:

Menegon, S., Gusatu, L., Sarretta, A., Mulazzani, A., Fadini, A., Abramic, A., M., Campillos-Llanos, M., Cervera-Nuñez, C., Gomez-Ballesteros, Borst, K., Kaitaranta, J., Lux, M., Suzanne, J.B., Souf, A. 2024. Analysing the state of current practices and synergies in data usage between Maritime Spatial Planning Directive and Marine Strategy Framework Directive. Preliminary survey results. Produced by the Technical Expert Group (TEG) on Data for MSP. Supported by CINEA and DG MARE (EC). Doi: 10.2926/904577

***EUROPE DIRECT is a service to help you find answers  
to your questions about the European Union***

Freephone number (\*):  
00 800 6 7 8 9 10 11

(\* The information given is free, as are most calls (though some operators, phone boxes or hotels may charge you)

**LEGAL NOTICE**

This document has been prepared for the European Commission, however it only reflects the views of the authors, and the Commission cannot be held responsible for any use which may be made of the information contained therein.

More information on the European Union is available on the Internet (<https://ec.europa.eu>).

Luxembourg: Publications Office of the European Union, 2024

---

PDF

ISBN 978-92-9405-091-5

DOI 10.2926/904577

HZ-05-24-105-EN-N

© European Union, 2024

Reproduction is authorised provided that the source is acknowledged.

The image on the cover page is a screenshot from the EMODnet geoportal map, which combines information about marine activities and EUSeaMap MSFD benthic habitats.

## TABLE OF CONTENTS

SUMMARY OF RESULTS	1
Introduction	2
Results	4
I.    Coherence – Policy objectives:	4
II.   Coherence – Competent authority:	5
III.  Coherence - Spatial scale:	5
IV.  Coherence - temporal scale:	6
V.    MSFD data in support of the MSP plans	6
VI.   Land-Sea-Interaction (LSI) in support of MSP plans	8
VII.  Analysis by countries	8
CONCLUDING REMARKS	11

## LIST OF FIGURES

Figure 1. The 13 surveyed countries: Spain, Finland, Sweden, The Netherlands, Italy, Denmark, Poland, Estonia, Ireland, France, Latvia, Croatia, and Romania.	3
Figure 2. Coherence of policy objectives between MSP and MSFD	4
Figure 3. Coherence in competent authorities for MSP and MSFD	5
Figure 4. Coherence in spatial scales for MSP and MSFD	5
Figure 5. Coherence at the temporal scale between MSP and MSFD	6
Figure 6. MSFD data – in support of the 4 planning stages: Stage 1- initial/preparation; Stage 2-Analysis and interpretation; Stage 3 –Planning; Stage 4 – Evaluation and monitoring.	7
Figure 7. a)The integration level of MSFD and MSP data glossaries and vocabularies; b) Integration level through a common data strategy.	8
Figure 8. Classification of national MSPs based on three analysed indicators: policy objectives, competent authority and spatial scales	9
Figure 9. Level of integration of MSFD data in the MSP plans, for the 4 stages of MSP (initial/preparation, analysis, planning, monitoring/evaluation).	10

## **SUMMARY OF RESULTS**

This document reports the results of a survey promoted by the Technical Expert Group (TEG) on Data for MSP to gather information on how the national MSP processes have taken into account the national MSFD implementation and, specifically, the dataset collected and produced under MSFD.

The results of the survey indicate a medium level of coherence (approximately 62% of respondents) between MSFD and MSP policy objectives. Furthermore, approximately 54% of the respondents indicated that the same competent authority is responsible for both the MSP and MSFD implementation. There is a medium-high spatial coherence between the areas falling under the MSP planning and areas considered by the MSFD, while the temporal coherence between the two planning frameworks is assessed to be mainly medium (38.5%) and low (23.1%). The integration of MSFD data within MSP is acknowledged to take place in particular during the initial/preparation stage (mix between qualitative and quantitative data), the analysis and interpretation stage and the planning stage (mainly descriptors, criteria and raw data), while there is less reliance on MSFD data in the evaluation and monitoring stage.

In the context of shared glossaries, the evaluation of cross-referencing levels between the two frameworks shows notable heterogeneity, with 31% agreeing on a high correspondence, 15% on medium, and 31% on low. Moreover, the extent of collaboration in adopting a shared strategy for data management is mainly at a low level (53.8%). Finally, the level of perceived integration between MSP and the management of land-sea integration is medium, and it implies mainly the exchange of qualitative data.

## INTRODUCTION

The Marine Strategy Framework Directive (MSFD, 2008/56/EC), adopted on 17<sup>th</sup> June 2008 requires EU Member States to take measures to achieve and maintain Good Environmental Status (GES) in the marine environment. It is supported by the European Commission Decision (EU) 2017/848 which lays down a set of criteria and methodological standards for assessing good environmental status in the marine environment. This Directive is implemented through national Marine Strategies. In 2014, the Directive 2014/89/EU of the European Parliament and of the Council of 23<sup>rd</sup> July 2014 establishing a framework for Maritime Spatial Planning (MSPD) was launched with the aim to promote the sustainable growth of maritime economies, the sustainable development of marine areas and the sustainable use of marine resources. These objectives are operationalized through the implementation of national maritime spatial plans, described as a process that enables national governments to analyse and organise human activities and uses in their respective marine areas, towards achieving ecological, economic and social objectives[2].

The two Directives are strictly correlated considering that both require data on ecosystem components, human activities and the consequent pressures affecting the marine environment.

As stated in Preamble 24 of the MSPD, “ensuring that maritime spatial plans are based on reliable data and to avoid additional administrative burdens, it is essential that Member States make use of the best available data and information by encouraging the relevant stakeholders to share information and by making use of existing instruments and tools for data collection”[2].

MSFD specifically requires the establishment of comprehensive monitoring programmes in order to collect and update those data, which should therefore be used to inform the MSP process.

Furthermore, both Directives require Member States to take into account ongoing impacts and potential impacts deriving from the measures foreseen to reach or maintain the GES (MSFD) or from future planned activities and uses of the sea (MSPD).

Therefore Member States have the opportunity to integrate the implementation of the two Directives facilitating “the use of MSFD knowledge in MSP, supporting the development of common marine/maritime knowledge systems and databases that are fed by knowledge-enhancing efforts carried out under each directive to support their implementation”[3].

As part of the Technical Expert Group on Data for MSP (TEG)<sup>1</sup> activities, the first steps towards the creation of robust common standards for MSP data collection imply a better understanding of the status-quo of MSP plans, as well as the degree of coherence with the MSFD. To this end, a survey, based on a semi-structured questionnaire (see Annex 1), was compiled in order to investigate a number of aspects related to data collection and use in the MSP plans:

- Coherence between MSPD and MSFD with regards to:
  - policy objectives,
  - the competent authority/authorities in charge of the two processes,
  - spatial coherence (integration),
  - temporal coherence with regards to the cycles of assessment.

---

<sup>1</sup> The Technical Expert Group on Data for MSP (TEG) was established in April 2020 as a common effort of the Directorate-General for Maritime Affairs and Fisheries (DG MARE) and the European Climate, Infrastructure and Environment Executive Agency (CINEA, ex-EASME), aiming primarily at exchanging knowledge and experience between Maritime Spatial Planning (MSP) practitioners and experts on MSP related spatial data[4].

- Data exchange and overlap between MSFD and MSPD related data during the MSP process. For the purpose of this analysis the following four main stages have been used:
  - initial/preparation,
  - analysis and interpretation,
  - planning,
  - evaluation and monitoring, including the data sharing strategy.
- Common glossaries and vocabularies between MSFD and MSPD.
- Interaction and data management/exchange with other planning processes, such as land sea interactions.



**Figure 1. The 13 surveyed countries: Spain, Finland, Sweden, The Netherlands, Italy, Denmark, Poland, Estonia, Ireland, France, Latvia, Croatia, and Romania.**

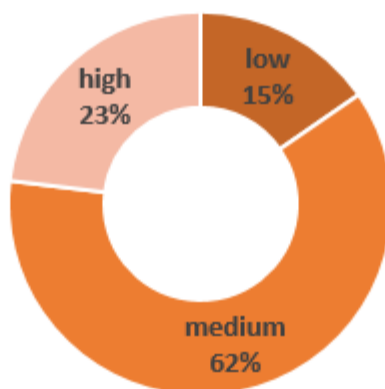
The survey collected responses from **13 MSP experts** in Spain, Finland, Sweden, The Netherlands, Italy, Denmark, Poland, Estonia, Ireland, France, Latvia, Croatia, and Romania. The data was collected in the period from June 2022–December 2022, which implies that the results of the current report reflect the situation, in terms of MSP plans and data integration levels, present at that time.

## RESULTS

### I. Coherence – Policy objectives:

The majority of the survey respondents (approximately 62%, Fig. 2) assess the coherence between MSPD and MSFD policy objectives with a medium score. This implies there is a certain level of interrelation between both policies (cross-referencing, they mention each other in the legal documents like legal annexes), but without specific common paths at the strategic level or any specific joint actions.

Coherence - Policy objectives



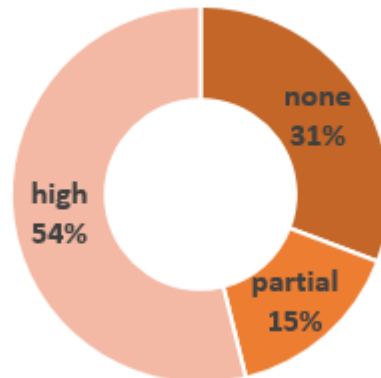
**Figure 2. Coherence of policy objectives between MSP and MSFD**

In most cases, the MSP process is mentioned in the national Marine Strategies as a type of measure set out for achieving the MSFD environmental goals and objectives. On the other hand, in most MSP plans, integrating the Ecosystem-Based Approach (EBA) entails incorporating the environmental goals defined in the national Marine Strategies directly as strategic objectives of the plans. It is also interesting to highlight that, in two cases, the Strategic Environmental Assessment (SEA) (that accompanies the MSP processes), has been directly aligned with the descriptors of the Marine Strategy Framework Directive, using them as a benchmark for the SEA assessment process. Concerning the highest assessed correlation between MSPD and MSFD (i.e., MSP2, see Fig. 8), it's important to highlight that this connection is linked not only to cross-referencing but also to common indicators for the action plans, under the same monitoring programme. However, while in most cases there is a level of exchange of information taking place between the competent authorities, it has been acknowledged that this is not always effective or sufficient: there are a number of respondents that pointed out the gaps in the data sharing process, generally highlighting that the process is lacking coordination (e.g. "no data sharing strategy exists; but, because the MSP and MSFD are dealt with in the same agency"); mainly focuses on a certain type of data exchanged ("only qualitative data in general"); the data sets shared are limited ("some MSFD datasets are incorporated into the marine plan"); or interoperability is lacking ("there are no common data infrastructures for the moment and they are not interoperable").

## II. Coherence – Competent authority:

The majority of respondents indicate that the competent authorities responsible for the current MSFD and MSP processes are functioning within the same department of the same Ministry (or inter-ministerial body/agency) or are part of the same authority but not the same department (Fig. 3). In four cases the two processes were taking place under different competent authorities (e.g., MSP under the Ministry of Transport, MSFD under the Ministry of Environment).

### Coherence - competent authority



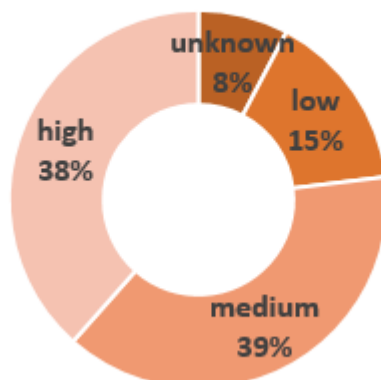
**Figure 3. Coherence in competent authorities for MSP and MSFD**

In some cases, the low coherence in policy objectives could be explained by the low correlation between the different competent authorities responsible for MSP and MSFD. However, there are cases where, while the two processes are managed by the same authority, there is low correlation between policy objectives.

## III. Coherence - Spatial scale:

Almost a third of the respondents report a high level of spatial data integration between the MSFD and MSP related processes, indicating that MSFD representation/reporting units would fully support the MSP planning or monitoring stages (Fig. 4). In these cases, the MSP plan overlaps with the MSFD marine waters, which typically accounts for the entire marine area, from the shoreline to the outer boundaries of the Exclusive Economic Zone.

### Coherence - spatial scales

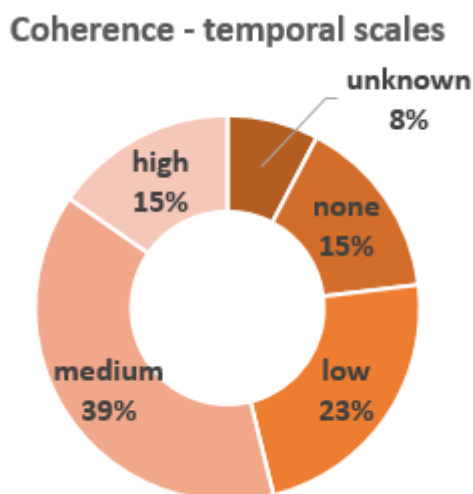


**Figure 4. Coherence in spatial scales for MSP and MSFD**

Where the MSP plan does not fully correspond to the MSFD areas, respondents indicate a number of reasons: 1) a spatial gap of up to 1 nautical mile (related to the overlap with the municipal comprehensive planning); 2) the potential future developments of the MSP (national coverage, but local/regional monitoring and evaluation); 3) the different interpretations of the two planning processes: MSP is considered mainly spatially and temporally oriented, while the Marine Strategy is not formulated with a strong spatial component.

#### IV. Coherence - temporal scale:

With regards to the temporal coherence, the majority of the respondents indicate a medium level of alignment between the cycles of the 2 analysed processes (Fig. 5), suggesting that the MSFD and MSP have temporal scales that occasionally/minimally overlap. Only in 2 cases did the two processes have a high level of temporal alignment, where the MSP cycle of assessment (evaluation and updating) would coincide with the MSFD cycles (every 6 years).



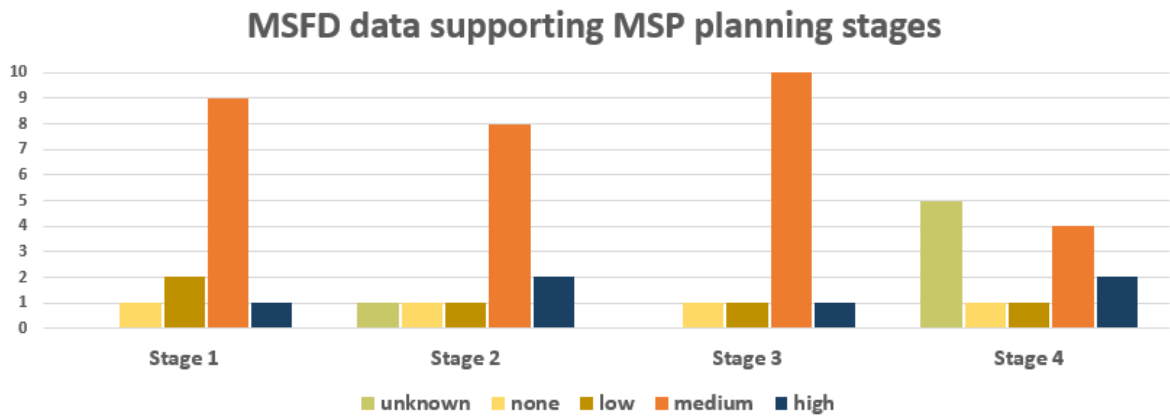
**Figure 5. Coherence at the temporal scale between MSP and MSFD**

The reasons for a low or medium coherence fall into one of the following categories: 1) the two processes started at different times and have different cycles (6 years for MSFD and 10 years for MSP), but it is expected that there will be alignments in the next round of revisions; 2) there is a possibility for the processes to overlap but it is uncertain (lack of data or the MSP is at a very early stage of implementation).

#### V. MSFD data in support of the MSP plans

The results of the survey indicate different levels of data coherence with MSFD data in the 4 stages of the MSP plan: 1) Stage 1 - Initial/preparation; 2) Stage 2 - Analysis and interpretation; 3) Stage 3 - Planning; 4) Stage 4 - Evaluation and monitoring. Moreover, there are notable differences between the type of data that is being exchanged, between respondents but also between the four above mentioned stages. There is a common agreement on the medium level of integration between MSFD data and MSP plans for the first 3 planning stages of MSP, implying that at least some of the information and considerations derived from the MSFD assessment have been included in the MSP's first 3 phases (Fig.6). Specifically, the integration of environmental considerations into the MSP plan, starting from the initial assessment, involves applying the MSFD descriptors and criteria. Moreover, in specific instances, datasets from the MSFD have been employed to bolster the creation of the essential MSP maps. However, in producing these maps, MSFD datasets generated from environmental monitoring programs were integrated with data from various studies, including ACCOBAMS (Agreement on the

Conservation of Cetaceans of the Black Sea, Mediterranean Sea, and contiguous Atlantic area).



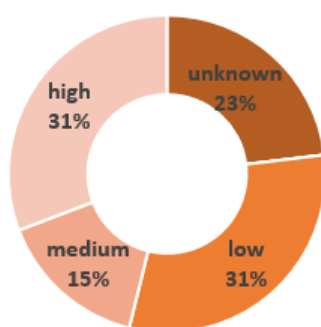
**Figure 6. MSFD data – in support of the 4 planning stages: Stage 1- initial/preparation; Stage 2-Analysis and interpretation; Stage 3 –Planning; Stage 4 – Evaluation and monitoring.**

Where there was a low correlation with the MSFD data, the respondents indicate a number of mismatches: 1) lack of synchronisation in collecting the data or aligning the scales at which the data was collected (e.g. in the analysis phase of some MSP processes, several additional surveys were carried out to acquire more pertinent and detailed data beyond what is provided by the MSFD); 2) the different aims/goals in collecting the data (the data and information from the MSFD are widely employed in Strategic Environmental Assessment, with a lesser application in sustainability and impact assessments conducted during the analysis stage of the plans.); 3) the different timelines for the 2 processes create impediments in having a common data strategy.

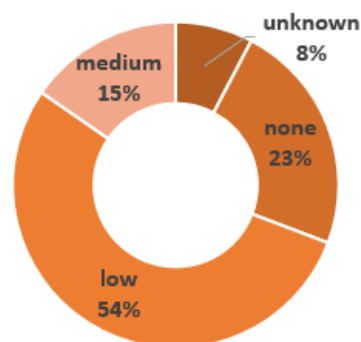
Due to the early stages of many MSP implementations, the correlation between the MSFD data and the MSP planning stage 4 (evaluation and monitoring), is largely unknown (for five respondents). The utilisation of MSFD data for assessing and monitoring MSP plans will primarily involve marine water monitoring data and, more specifically, it will focus on tracking progress towards achieving Good Environmental Status (GES) throughout different MSFD cycles, utilising MSFD descriptors and criteria. Only one respondent indicated a high correlation between MSFD data and the last stage of the MSP process, underlining that the Marine Strategy data will be needed to update the diagnosis of the MSP plans.

With regards to the data type, the respondents indicated a variety of options, with a mix of qualitative and quantitative data (raw or descriptors) in Stages 1 and 4 and mainly quantitative data (raw or descriptors) in Stages 2 and 3.

a. Integration of data glossaries and vocabularies



b. Data sharing strategy



**Figure 7. a) The integration level of MSFD and MSP data glossaries and vocabularies; b) Integration level through a common data strategy.**

Despite indicating a generally medium and high coherence in terms of policy objectives and alignment of competent authorities responsible for the two processes, the largest share of the respondents (approx. 31%) report a low coherence in terms of glossaries and vocabularies (Fig. 7a.). This could partly be explained by the lack of a common data strategy, with 54% of the respondents indicating a low data sharing strategy implemented by the competent authorities (Fig. 7b).

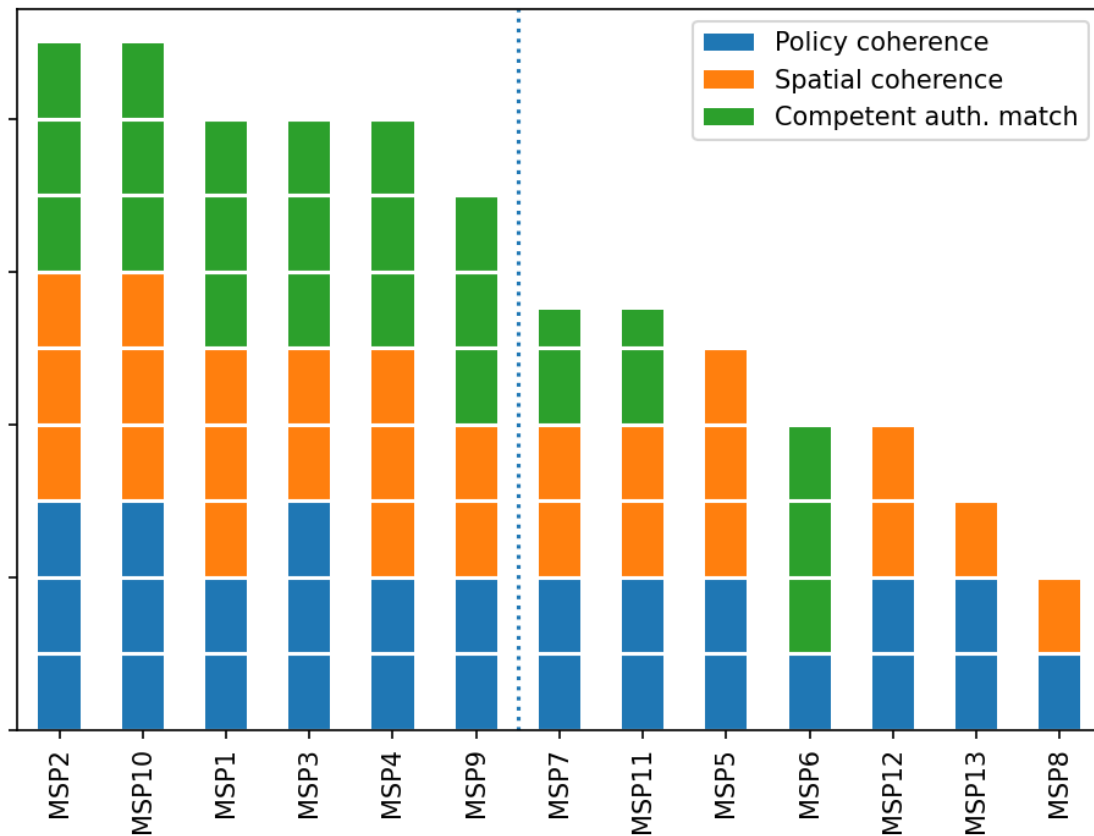
## **VI. Land-Sea-Interaction (LSI) in support of MSP plans**

Lastly, in analysing the level at which the MSP process incorporates data and information from land-sea interactions (such as marine pollution data, or statistics on coastal tourism), we differentiate between stages 1, 2, 3 and stage 4 in the MSP process. The results of the survey indicate that largely there is a medium level of integration of LSI data, mainly qualitative (and in three cases a mix of qualitative and quantitative) in Stages 1, 2 and 3, and qualitative or mixed in Stage 4. The LSI data typically refers to marine water quality data or data on tourism and fisheries. Where there is no or a low level of LSI data in the MSP plan the main constraint is data accessibility for coastal areas.

However, some data could be provided by the implementation of the Water Framework Directive which applies to coastal waters. Synergies with the WFD were not explored in the survey.

## **VII. Analysis by countries**

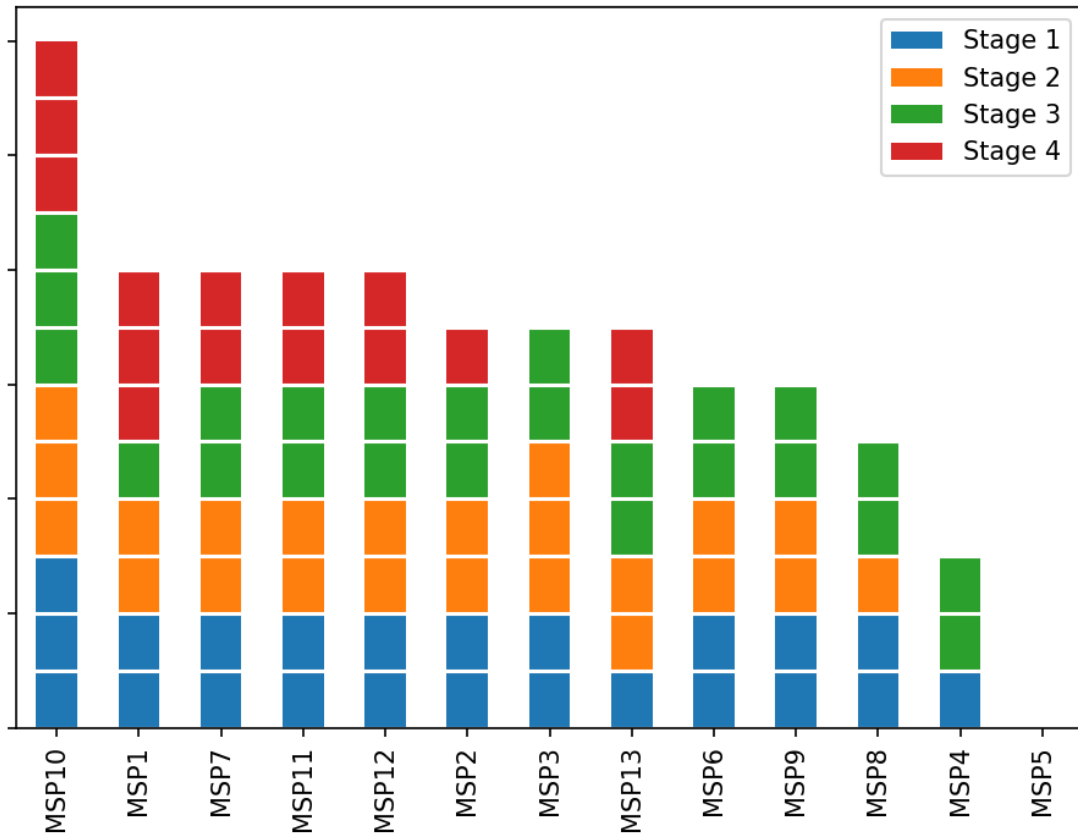
We cross-analysed the results of the survey using three indicators for the integration of MSFD data in MSP plans, namely the coherence in policy objectives, competent authority and spatial scales. Based on this, we can differentiate between two groups of national MSPs, when we classify considering at least a medium level of integration reported for all three above-mentioned indicators (represented by the dotted line in Fig. 8). This could indicate for the first group identified (left of the dotted line in Figure 8) a greater potential for integration between the two processes, through facilitated cooperation and coordination between authorities (or within the same regulatory authority) in the implementation of shared policy objectives.



**Figure 8. Classification of national MSPs based on three analysed indicators: policy objectives, competent authority, and spatial scales.**

Hence, the first group of countries (left side of the dotted line) reports a high level of coherence for common policy objectives, competent authority and the high spatial overlap between areas associated with MSP and MSFD implementation. Further, we also notice generally a medium to high level of MSFD data integration with initial preparation, analysis and planning stages of the MSP processes. For these cases, the type of MSFD data integrated in the MSP plans varies across the first three stages of the plan, with mainly qualitative data integrated into the initial stage and mainly quantitative (descriptors and raws) integrated in the analysis and planning stages.

Due to the status of most analysed MSPs, the data integration level within the last stage of the MSP process (monitoring/evaluation) is still highly uncertain, though there is a high potential for the use of MSFD data related to monitoring and assessment of the GES (see Fig. 9).



**Figure 9. Level of integration of MSFD data in the MSP plans, for the 4 stages of MSP (initial/preparation, analysis, planning, monitoring/evaluation).**

The second group of identified national MSPs (on the right side of the dotted line in Fig. 8) exhibits less consistency in terms of the level of MSFD-MSP coherence across the first three indicators (policy objectives, competent authority, spatial scale). This observation can be associated to: 1) MSPs in early stage of the planning process (Stages 1 or 2), with a high degree of uncertainty of future developments and common data sharing strategies; 2) MSPs where the lack of alignment and coherence is attributed to a mismatch in policy objectives, potentially exacerbated by the fact that the two processes (MSFD and MSP) fall under the responsibility of two different competent authorities. Moreover, the plans exhibit a notable spatial and temporal mismatch between the designated areas of the MSFD and MSP, resulting in a lack of collaboration in terms of data sharing.

## CONCLUDING REMARKS

In conclusion, the results of the survey reveal an overall medium level of policy objective coherence between MSFD and MSP and a high integration of the competent authorities. The spatial overlap between the MSFD and MSP planning areas is medium to high, with a medium to low integration of the temporal scale (MSFD and MSP cycles). The respondents reported a medium level of integration of MSFD data in the first three MSP stages, while there is a higher degree of uncertainty related to the last stage of the MSP process (monitoring/evaluation).

### Lessons learnt:

- common policy objectives and cooperation between the competent authorities are essential to facilitate the integration of data between the two processes;
- currently, the data (collection and exchange) overlap between the two processes takes place in the initial stage (in relation to the criteria used in the assessment of the status of the environment) and in the planning stage (towards achieving common policy objectives);
- there is a clear opportunity to align and integrate MSFD data collection and analysis in the last stage of the MSP plans evaluation (i.e., monitoring), through the use of data from the MSFD monitoring and the assessment of environmental status. Depending on how far or close the Member State is from reaching good environmental status, the MSP plan could be reviewed following an ecosystem-based approach in view to achieve GES;
- however, in cases of scale mismatch between the MSFD reporting units (defined as the spatial delimitation where the data for the GES descriptors are collected and the assessment of the status of marine waters is carried out) and the MSP planning elements, the integration of MSFD data into the plan processes is difficult and reduces the potential for future improvements;
- improving the data sharing strategies and practices (as specified in the MSFD Article 19.3, see also TEG-DATA (2018)5) (e.g., access and use rights to the data and information resulted from the initial assessments of the status of the marine environment, implementing open and interoperable infrastructures) will facilitate the data integration process. It could be done by incorporating both raw data and aggregated results of the assessment of status according to MSFD descriptors and criteria in the early stages of the MSP process and also using the MSP outcomes (e.g., the data produced by the MSP monitoring facilities) and data to strengthen the MSFD assessments. A shared data strategy is particularly important in situations where MSP and MSFD are handled by different institutions.

### Further suggestions

- Establish matching working protocols for institutions and technicians working in both areas, MSP and MSFD;
- Improve data sharing facilities: encourage sharing of all data and information (possibly in an open form) including qualitative (result) data as well as (quantitative) raw MSFD monitoring data (e.g., considering enabling access to such data through the EMODnet Data Services).
- There is a need for increased compliance with Directive 2007/2/EC (INSPIRE Directive), further emphasised by Article 19.3 in the MSFD, which requires the Member States to provide the Commission with access and use rights for the data collected and information resulting from the initial assessments of the marine environment. This would foster the understanding of challenges and gaps in the data integration between the MSP and MSFD processes, as well as streamlining the data exchange and the formulation of a shared data strategy.
- MSFD Descriptors can be assessed at different spatial scales (Reporting units) depending on the descriptor (e.g., mammals and birds vs. benthic species) and the marine region. In such cases both the reported MSFD qualitative data (status

of indicator per reporting unit) and underlying raw (quantitative) data can be useful for MSP planning and analysis processes. Therefore, sharing of data on both aggregation levels should be ensured as this can be useful input data for MSP plans.

### **Further suggestions to improve the analysis**

As part of possible future improvements with regards to this TEG activity across European sea basins, a number of potential discussion points and knowledge gaps have been identified:

- expand the analysis to assess additional factors that may influence the quality of data integration between MSFD and MSP. For instance, consider exploring intrinsic characteristics of member state plans, particularly the size of the maritime areas subject to planning, which varies significantly—from approximately one million square kilometres (e.g., Spain) to just a few hundred square kilometres (e.g., Slovenia).
- identify the different common data collection procedures/practices (spatio-temporal scales, focus areas, indicators), in relation to the policy objectives common to MSP and MSFD, in the early stages of planning process;
- identify the potential action plans for data sharing and management in relation to the GES monitoring and assessment programmes (as part of MSFD), in the final stage of the planning process;
- assess how “lessons learnt guidelines/practices” can be disseminated between MSPs at a more advanced stage and MSPs at the initial stages in relation to data sharing;
- identify the potential future developments of MSP plans, in terms of spatial scale in the different stages of the MSP process;
- in addition, there is the potential to enhance the analysis by including more Member States in the survey, as well as organising in-depth interviews as a follow-up (confirmation, discussion, consolidation) of the results obtained through the semi-structured survey;
- finally, extending the scope of the survey to better include the MSFD viewpoint, could enhance the understanding of the challenges of different Member States to integrate the MSP and MSFD processes from a data framework perspective, but also highlight the opportunities and synergies to be tackled. This goal could be realised by engaging the MSFD authorities, with the assistance of working groups specialising in data and information within the MSFD context, such as WG DIKE<sup>2</sup> and TG Data<sup>3</sup>.

---

<sup>2</sup> WG DIKE - Working group on Data Information and Knowledge Exchange

<sup>3</sup> TG Data - Technical Group on Data

## **BIBLIOGRAPHY**

- [1]. European Commission. Commission Decision (EU) 2017/ 848 - of 17 May 2017 - laying down criteria and methodological standards on good environmental status of marine waters and specifications and standardised methods for monitoring and assessment, and repealing Decision 2010/47. Official Journal of the European Union 2017, 43–74 (2017).
- [2]. The European Parliament and the Council of the European Union. DIRECTIVE 2014/89/EU OF THE EUROPEAN PARLIAMENT AND OF THE COUNCIL of 23 July 2014 establishing a framework for maritime spatial planning. Official Journal of the European Union 2014, 135–145 (2014).
- [3]. European Commission, European Climate, Infrastructure and Environment Executive Agency, Ruskule, A., Oulès, L., Zamparutti, T. et al., Guidelines for implementing an ecosystem-based approach in maritime spatial planning – Including a method for the evaluation, monitoring and review of EBA in MSP, Publications Office, 2021, <https://data.europa.eu/doi/10.2926/84261>
- [4]. European MSP Platform. Technical Expert Group (TEG) on Data for MSP. Available at: <https://maritime-spatial-planning.ec.europa.eu/msp-resources/technical-expert-group-teg-data-msp>. (Accessed: 24th October 2023)

## **ANNEX 1: QUESTIONNAIRE USED FOR THE SURVEY**

### **MSFD Data for supporting the planning process**

This survey is promoted by the Technical Expert Group (TEG) on Data for MSP [1] to gather information on how the national MSP processes and other management and planning processes (e.g., integrated coastal zone management - ICZM) have taken into account the national MSFD implementation (in particular with regard to data integration).

A final group of questions is also included to investigate whether (and how) the surveyed planning process also incorporates information and data on land-sea interactions.

The survey results will be published on the final report of the TEG on Data for MSP.

Thank you for agreeing to participate in this initiative.

[1]<https://maritime-spatial-planning.ec.europa.eu/msp-resources/technical-expert-group-teg-data-msp>

### **Email**

[text]

### **Author**

Author or authors of this survey

[text]

### **Title of the planning experience**

E.g. Italian MSP, Danish MSP

[text]

### **Type of the planning experience**

Type of surveyed planning experience. If "Other", please specify below.

- MSP
- ICZM
- Other...

### **Background coherence - Policy objectives**

Assess the coherence level between the planning process you are currently surveying and the national MSFD implementation with regard to policy objectives.

Suggestions for the assessment:

Unknown: There is not enough information to evaluate whether policies are integrated and to what extent

None: There is no coherence between policies. Neither of them mention the other in their respective texts

Low: There is some interrelation between both policies, they mention each other in their respective texts but without specifying common paths at the strategic level, neither direct joint actions.

Medium: There is interrelation between both policies, they mention each other and establish some common paths at the strategic level, however they don't set any specific joint actions.

High: There is interrelation between both policies, they mention each other in their respective texts, establish some common paths at the strategic level, and they share specific joint actions (i.e., governance bodies, monitoring programs, exchanges platforms)

Coherence level

Please, assess the coherence level

- Unknown
- None

- Low
- Medium
- High

Description

Please provide reasons for your assessment

[text]

### **Background coherence - Competent Authority**

Assess the "Matching level" between the planning process you are currently surveying and the national MSFD implementation with regard to the Competent Authorities.

Suggestions for the assessment:

Unknown: There is no information

None: Competent authorities are totally different entities for one and the other policy

Partial: Competent authorities are part of the same Ministry or are coordinated by the same entity but are not the same department.

Same: Competent authorities are the same department of the same Ministry or the same interministerial body or agency

Matching level

Please, assess the matching level

- Unknown
- None
- Partial
- Same

Please provide reasons for your assessment

[text]

### **Scales - Spatial Scales**

Assess the "Coherence level" between the planning process you are currently surveying and the national MSFD implementation with regard to the Spatial Scales.

Suggestions for the assessment:

Unknown: There is not enough information

None: MSFD and MSP spatial scales are different. E.g. MSFD scale is too coarse to support the MSP process

Low: MSFD and MSP spatial scales have minimal/occasional overlap

Medium: MSFD and MSP spatial scales have partial overlap. E.g. MSFD and MSP adopt the same spatial scale but the representation/reporting units are different

High: MSFD representation/reporting units allow to fully support the MSP planning/monitoring stages

Coherence level

Please, assess the coherence level

- Unknown
- None
- Low
- Medium
- High

Description

Please provide reasons for your assessment

[text]

### **Scales - Temporal scales / cycle of assessment**

Assess the "Coherence level" between the planning process you are currently surveying and the national MSFD implementation with regard to the temporal scales / cycle of assessment.

Suggestions for the assessment:

Unknown: There is not enough information

None: MSFD and MSP temporal scales are different

Low: MSFD and MSP temporal scales have minimal/occasional overlap

Medium: MSFD and MSP temporal scales have partial overlap

High: MSFD and MSP are temporally consistent and they adopt the same assessment/monitoring cycle

Coherence level

Please, assess the coherence level

- Unknown
- None
- Low
- Medium
- High

Description

Please provide reasons for your assessment

[text]

### **MSFD Data - Supporting the planning stages**

Assess how the MSFD Data have been included/integrated into the planning process.

You will be asked to assess the level of MSFD data integration at each of the four stages into which a plan process can be divided:

Stage 1 – Initial/preparation (e.g. Initial assessment, define goals and objectives)

Stage 2 – Analysis and interpretation

Stage 3 – Planning

Stage 4 – Evaluation and monitoring

Integration level

Assess whether and how the MSFD data have been incorporated into the four stages of the planning process you are currently surveying.

Suggestions for the assessment:

Unknown: There is not enough information

None: No MSFD data has been used

Low: Only a few information and considerations derived from the MSFD assessment have been included

Medium: Several/the majority of information and considerations derived from the MSFD assessment have been included

High: Almost all information and considerations derived from the MSFD assessment have been included

### **STAGE 1 - INITIAL / PREPARATION**

Description (optional)

[text]

Please, assess the "Integration level" for the STAGE 1

- Unknown
- None
- Low
- Medium
- High

Please, specify the MSFD data types used for supporting the STAGE 1 of the planning process

- Unknown
- None
- Quantitative – raw
- Quantitative – descriptors
- Qualitative

Please provide reasons for your "Integration level" and "Data type" assessments

[text]

### **STAGE 2 - ANALYSIS AND INTERPRETATION**

Description (optional)

[text]

Please, assess the "Integration level" for the STAGE 2

- Unknown
- None
- Low
- Medium
- High

Please, specify the MSFD data types used for supporting the STAGE 2 of the planning process

- Unknown
- None
- Quantitative – raw
- Quantitative – descriptors
- Qualitative

Please provide reasons for your "Integration level" and "Data type" assessments

[text]

### **STAGE 3 - PLANNING**

Description (optional)

[text]

Please, assess the "Integration level" for the STAGE 3

- Unknown
- None
- Low
- Medium
- High

Please, specify the MSFD data types used for supporting the STAGE 3 of the planning process

- Unknown
- None
- Quantitative – raw
- Quantitative – descriptors
- Qualitative

Please provide reasons for your "Integration level" and "Data type" assessments  
[text]

#### **STAGE 4 - EVALUATION AND MONITORING**

Description (optional)

[text]

Please, assess the "Integration level" for the STAGE 4

- Unknown
- None
- Low
- Medium
- High

Please, specify the MSFD data types used for supporting the STAGE 4 of the planning process

- Unknown
- None
- Quantitative – raw
- Quantitative - descriptors
- Qualitative

Please provide reasons for your "Integration level" and "Data type" assessments  
[text]

#### **MSFD Data - Common glossaries and vocabularies**

Assess the integration level between the planning process you are currently surveying and the national MSFD implementation with regard to the use of common definitions, glossaries and vocabularies.

Suggestions for the assessment:

Unknown: There is not enough information

None: No MSFD glossary/vocabulary has been used

Low: Just a few terms are in common

Medium: Several/the majority of the terms are in common

High: Almost all terms are in common

Please, assess the "Integration level"

- Unknown
- None
- Low
- Medium
- High

Description

Please provide reasons for your assessment

[text]

### **MSFD Data - Data sharing strategy**

Assess the integration level between the planning process you are currently surveying and the national MSFD implementation with regard to the data sharing strategies.

Suggestions for the assessment:

Unknown: There is not enough information

None: There is no connection/integration between the two data strategy

Low: MSFD and MSP processes reference each other in a loose way

Medium: MSFD and MSP processes adopt different (but interoperable) data infrastructures

High: MSFD and MSP processes share the same data infrastructure

Integration level

Please, assess the "Integration level"

- Unknown
- None
- Low
- Medium
- High

Description

Please provide reasons for your assessment

[text]

### **Land-sea interactions data**

These final questions aim to investigate whether (and how) the surveyed planning process incorporates information and data on land-sea interactions (LSI).

Examples of LSI data are:

- marine pollution caused by coastal activities (e.g. agricultural runoff, industrial ports, urban areas)
- pollution from river discharge and wastewater
- statistics and trend on coastal tourism

You will be asked to assess how LSI data have been used for:

Stage 1, 2 and 3 – Initial/preparation, Analysis and interpretation, and Planning

Stage 4 – Evaluation and monitoring

Integration level

Assess whether and how the LSI data have been incorporated into the four stages of the planning process you are currently surveying.

Suggestions for the assessment:

Unknown: There is not enough information

None: No LSI-related data has been used

Low: Only a few information and considerations related to Land-Sea Interactions have been included

Medium: Several/the majority of information and considerations related to Land-Sea Interactions have been included

High: Almost all information and considerations related to Land-Sea Interactions have been included

#### STAGES 1, 2 AND 3 - INITIAL, ANALYSIS AND PREPARATION, PLANNING

Description (optional)

[text]

Please, assess the "Integration level" for the STAGES 1, 2 and 3

- Unknown
- None
- Low
- Medium
- High

Please, specify the LSI data types used for supporting the STAGES 1, 2 and 3 of the planning process.

- Unknown
- None
- Quantitative
- Qualitative

Please provide reasons for your "Integration level" and "Data type" assessments

#### STAGES 4 - EVALUATION AND MONITORING

Description (optional)

[text]

Please, assess the "Integration level" for the STAGE 4

- Unknown
- None
- Low
- Medium
- High

Please, specify the LSI data types used for supporting the STAGE 4 of the planning process

- Unknown
- None
- Quantitative
- Qualitative

Please provide reasons for your "Integration level" and "Data type" assessments

[text]

**References**

Description (optional)

[text]

References

Please, provide references (e.g. URLs) to the surveyed planning process and/or other documents used for the assessment

[text]

## GETTING IN TOUCH WITH THE EU

### In person

All over the European Union there are hundreds of Europe Direct information centres. You can find the address of the centre nearest you at:

[https://europa.eu/european-union/contact\\_en](https://europa.eu/european-union/contact_en)

### On the phone or by email

Europe Direct is a service that answers your questions about the European Union. You can contact this service:

- by freephone: 00 800 6 7 8 9 10 11 (certain operators may charge for these calls),
- at the following standard number: +32 22999696, or
- by email via: [https://europa.eu/european-union/contact\\_en](https://europa.eu/european-union/contact_en)

## FINDING INFORMATION ABOUT THE EU

### Online

Information about the European Union in all the official languages of the EU is available on the Europa website at: [https://europa.eu/european-union/index\\_en](https://europa.eu/european-union/index_en)

### EU publications

You can download or order free and priced EU publications from:

<https://publications.europa.eu/en/publications>

Multiple copies of free publications may be obtained by contacting Europe Direct or your local information centre (see [https://europa.eu/european-union/contact\\_en](https://europa.eu/european-union/contact_en)).

### EU law and related documents

For access to legal information from the EU, including all EU law since 1952 in all the official language versions, go to EUR-Lex at: <http://eur-lex.europa.eu>

### Open data from the EU

The EU Open Data Portal (<http://data.europa.eu/euodp/en>) provides access to datasets from the EU. Data can be downloaded and reused for free, for both commercial and non-commercial purposes.



Publications Office  
of the European Union

doi: 10.2926/904577  
ISBN 978-92-9405-091-5