



Your gateway to marine data in Europe

EMODnet Human Activities

EU MSP data layer and current state of play

13 March 2024

Jose L. Santiago

Marta Ballesteros

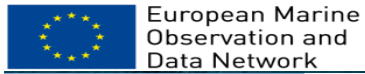


jsantiago@cetmar.org





EMODnet



EMODnet Human Activities

Layers	Catalogue
	EMODnet Human Activities ▾
	Aggregate Extraction >
	Algae Production >
	Aquaculture >
	Cables >
	Cultural Heritage >
	Desalination >
	Dredging >
	Energy >
	Environment >
	Fisheries >
	Main Ports >
	Maritime Spatial Planning >



The speed and the ease with which users can identify, locate, access, exchange and use data and information about the oceans and seas are the keys to the success of community marine research projects and to effective support of **marine economic and marine management activities**

Use Cases

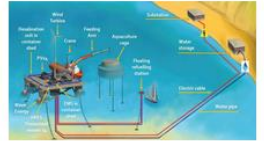
Bathymetry Geology Human Activities

06 Oct 2023

Utilizing marine data for the design of a floating multiuse renewable energy platform

The user organisation

RESEARCH/ACADEMIA



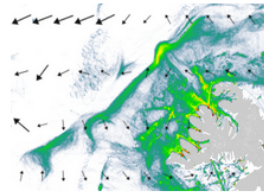
Human Activities

19 Oct 2022

Detection of abnormal vessel behaviour

Frontex applications combine EMODnet map services with other internal and external map services for supporting detection of abnormal vessel behaviour.

GOVERNMENT/PUBLIC ADMINISTRATION



Bathymetry Geology Human Activities

EMODnet Human Activities Data Facilitate Business Opportunities

Biosfera XXI has been using EMODnet data since 2016, mainly for its marine projects, in particular, the environmental impact assessment project "The electricity interconnection across the Biscay Gulf".

BUSINESS/PRIVATE SECTOR



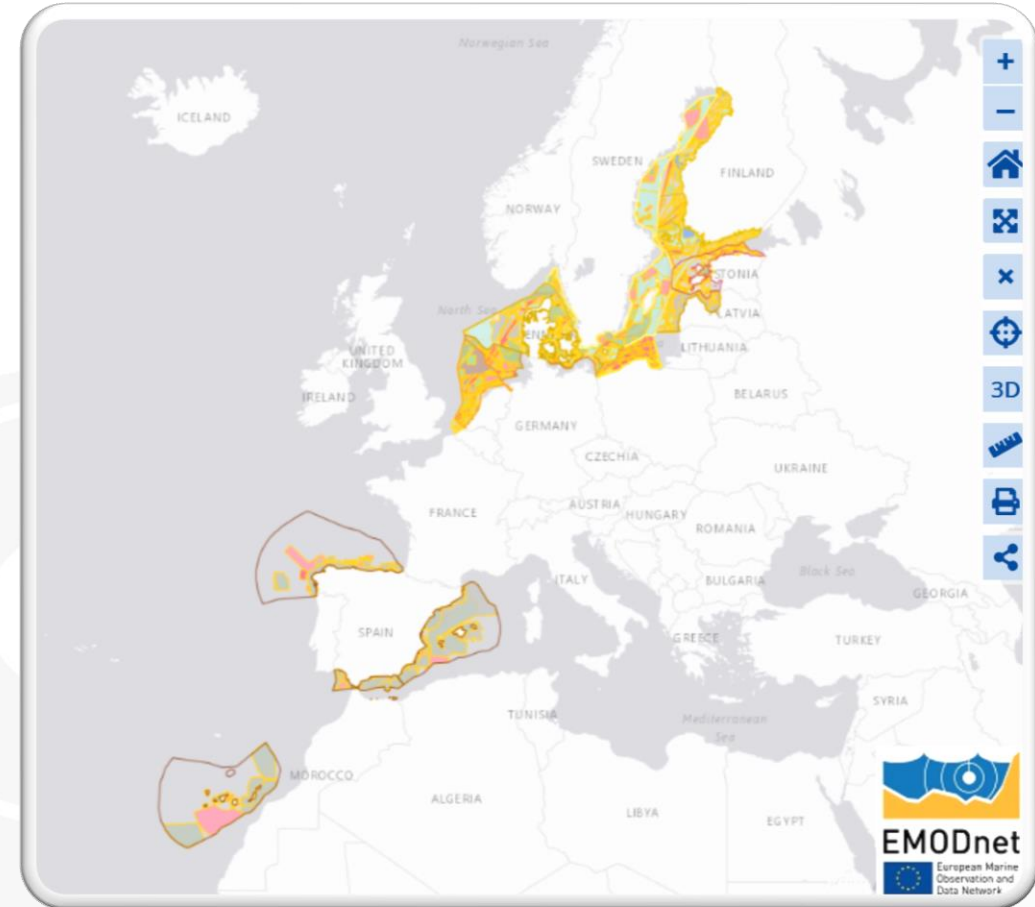


EMODnet



The MSP data layer in a nutshell

- 📍 10 EEZ of Member States
- 📍 Harmonized with the Human Activities
- 📍 Categorized by functions (allow, forbidden, potential...)
- 📍 Comparative across countries
- 📍 Overlap current activities





EMODnet



European Marine
Observation and
Data Network

EU MSP data layer

- ④ **Up-to-date picture of current and anticipated uses of the marine space in the EU**
- ④ **What for:** to **visualize** and **compare** across countries, uses and activities.
- ④ **Assets:**
 - ④ The harmonize MSP and the the original MSP of each Member State are available at the platform.
 - ④ Information can be visualized and downloaded to serve multiple purposes and target audiences.
 - ④ Support for policy processes at EU, MS, regional and local level.



EMODnet



European Marine
Observation and
Data Network

Where the MSP data comes from?

1

Official GIS **data**
from the **approved**
plans

2

Reported from the
Member States
and their GIS
experts/portals

3

Feedback from
developers to
validate the output
of the harmonized
plan

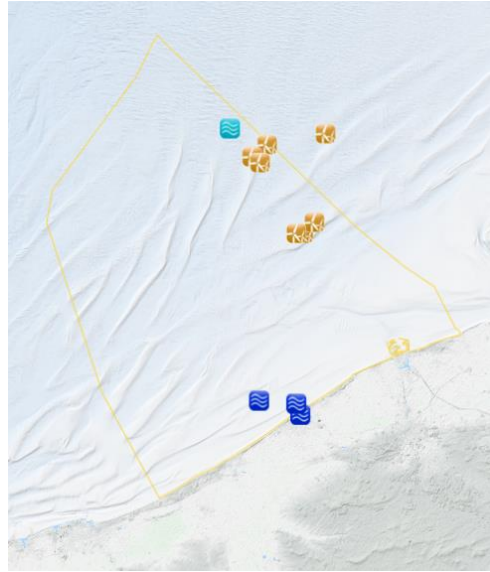
4

Update

📍 Visualize current activities



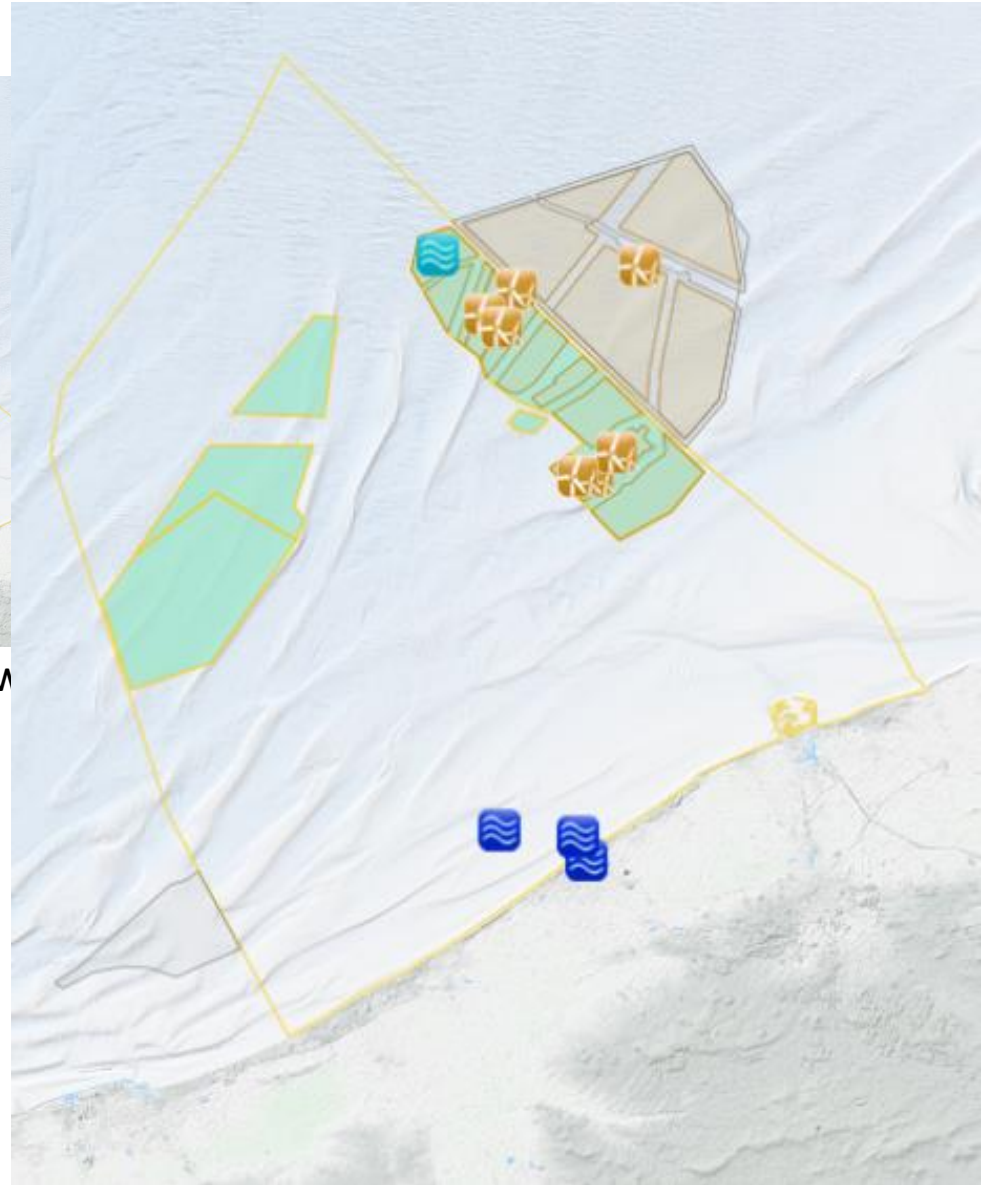
Belgium EEZ



Ocean energy



Ocean energy (w

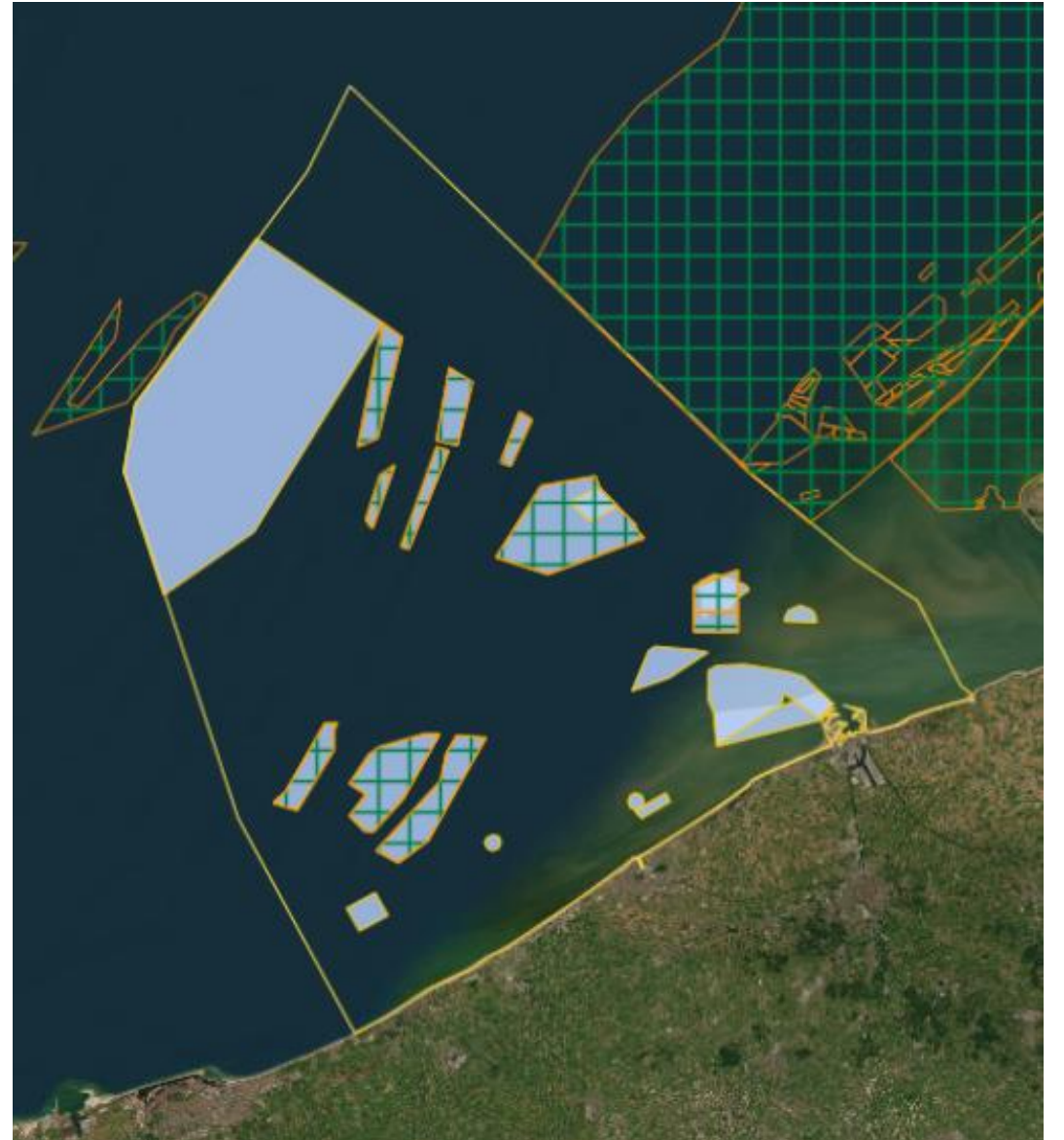


📍 And future developments!

ACTIVE AGGREGATE EXTRACTION AREAS BELGIUM

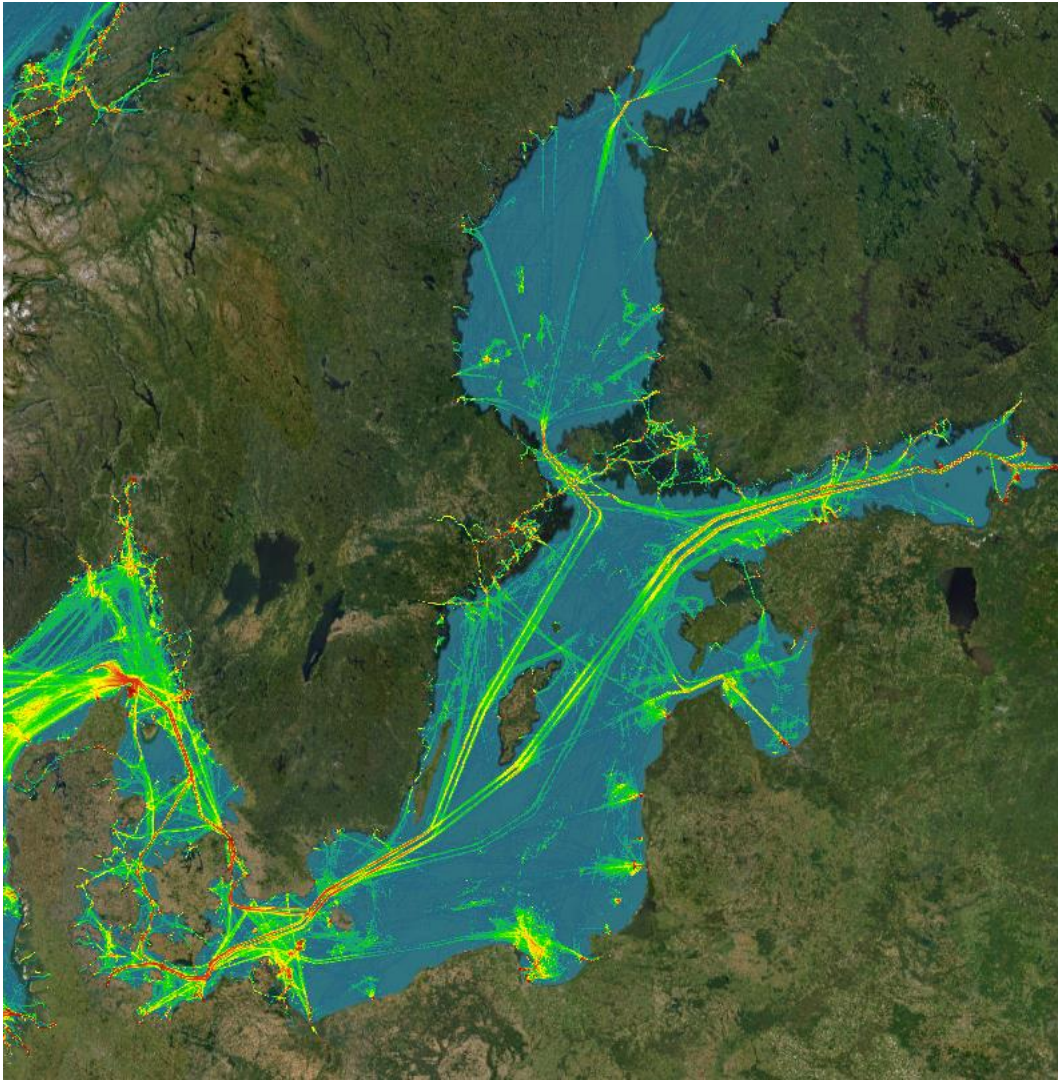


Present

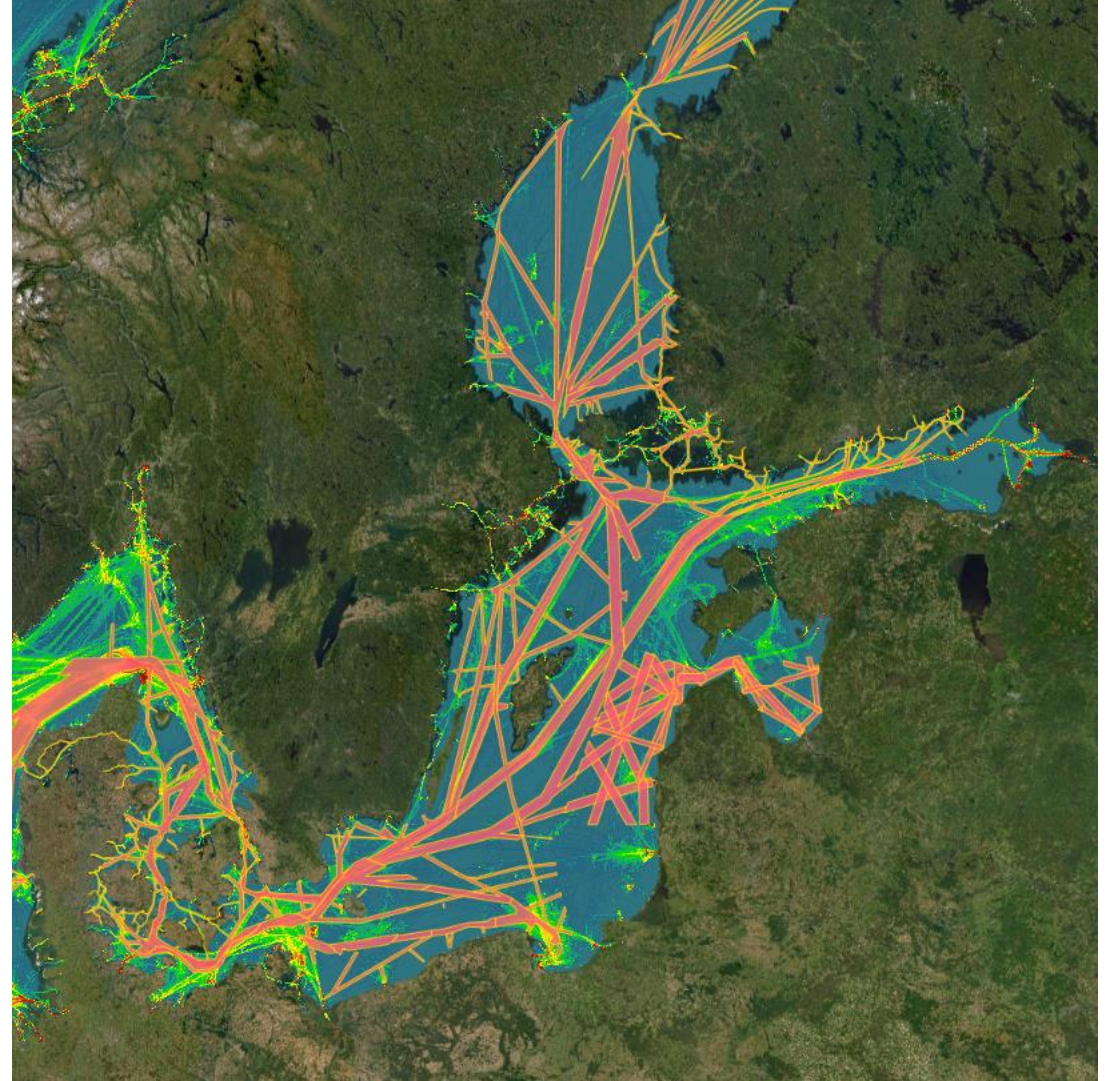


Planned

Shipping traffic

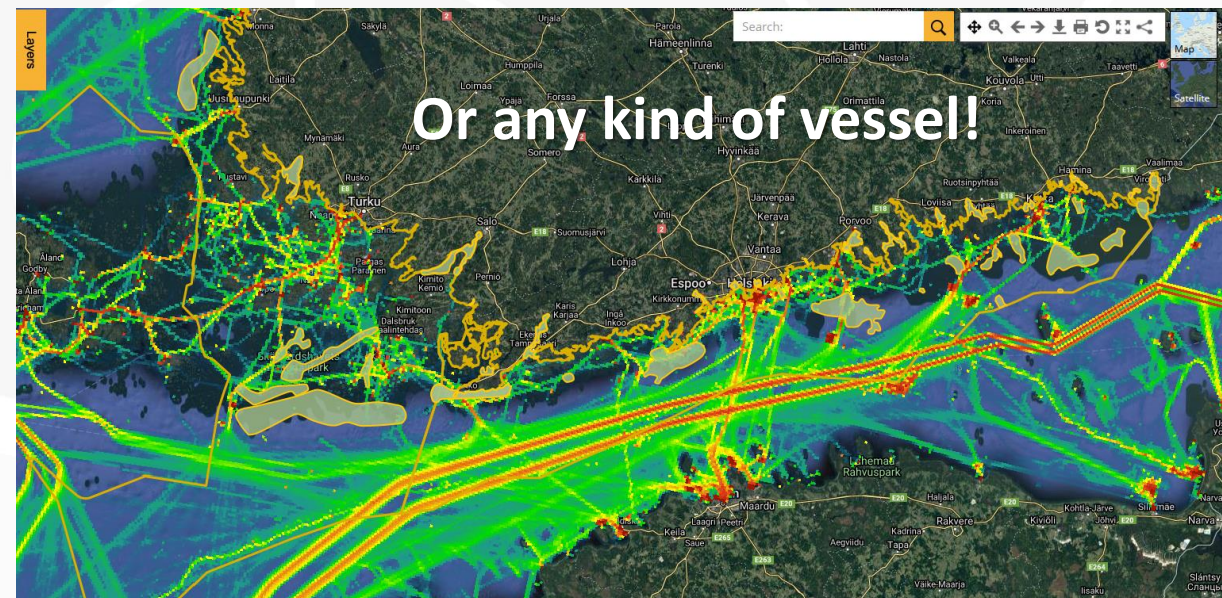
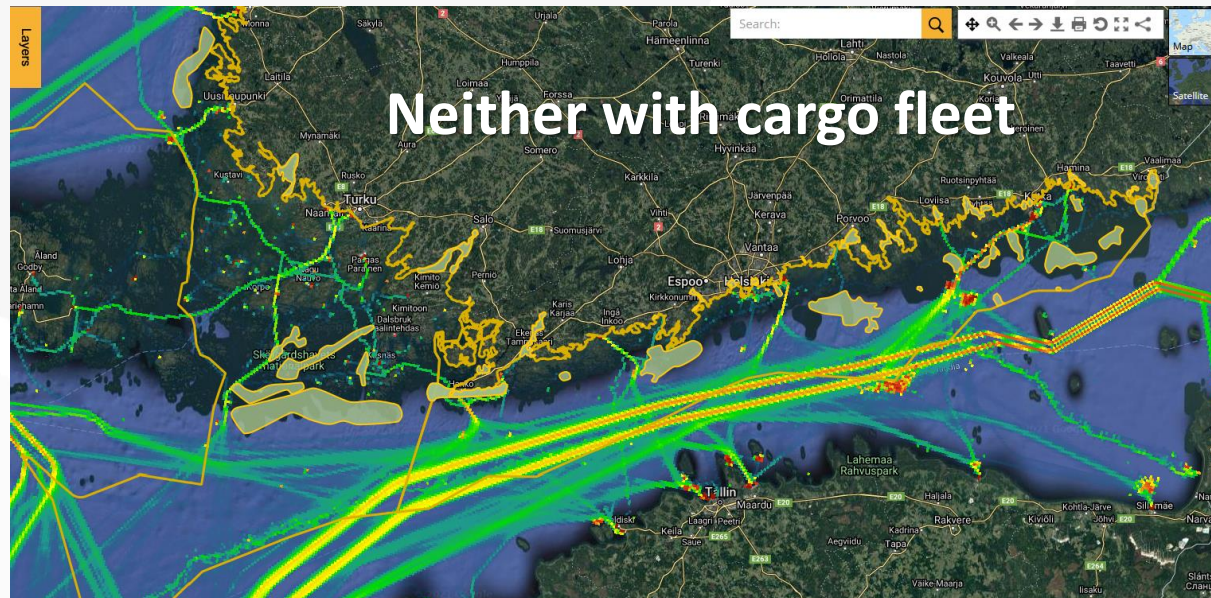
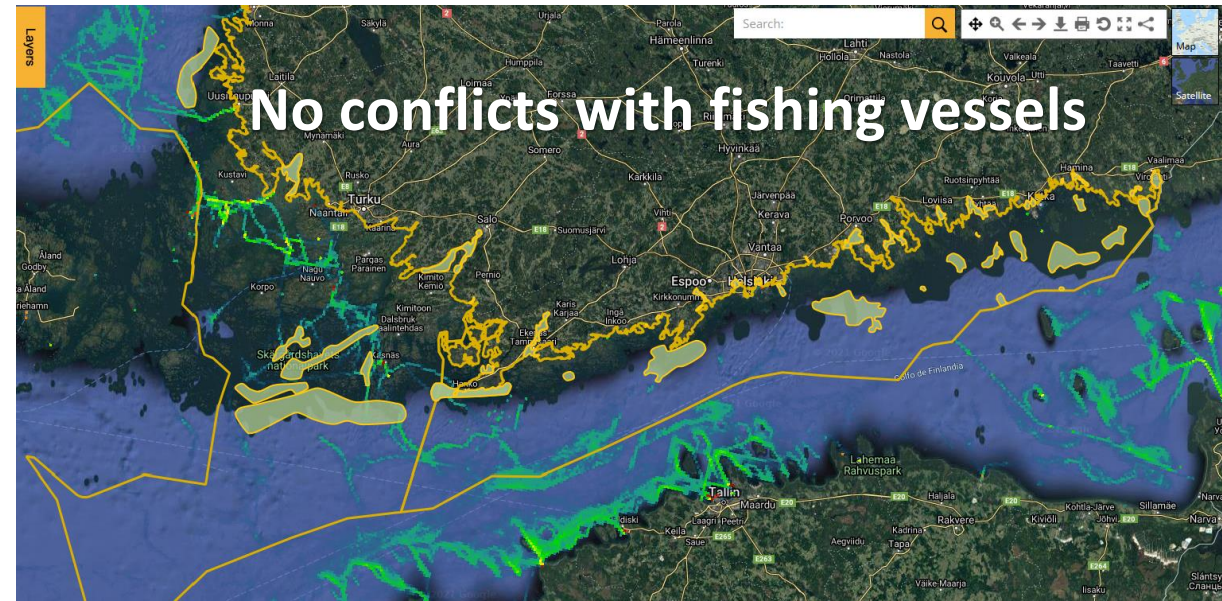


Planning for Maritime Transport





Nature protected areas



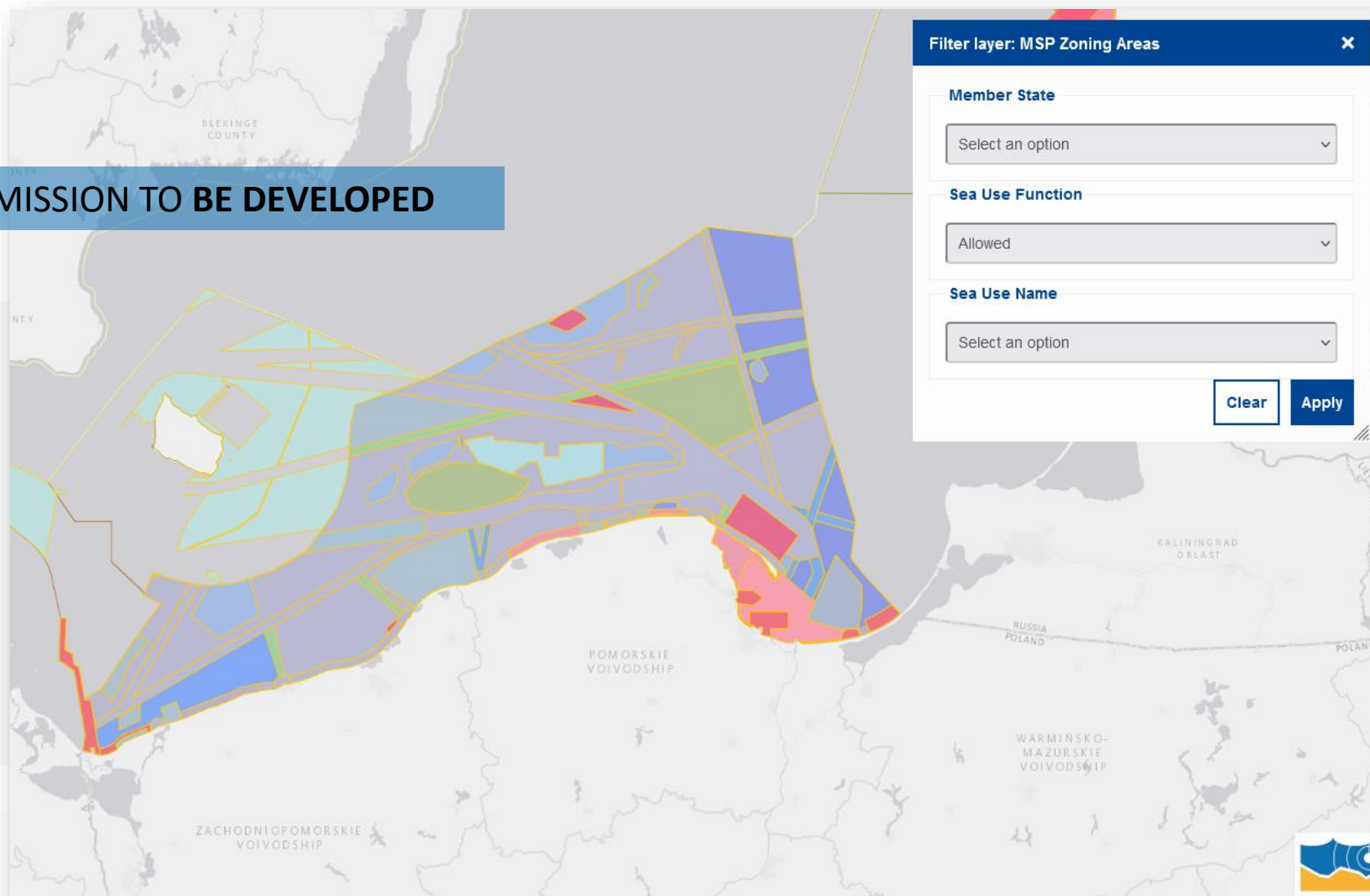


EMODnet




Allowed

ACTIVITIES WITH PERMISSION TO BE DEVELOPED



Forbidden – For instance: Transport and anchoring in Germany

**ACTIVITIES THAT CAN NOT BE DEVELOPED
ACCORDING TO THE PLAN**



MSP Zoning Areas (2 of 2)	
Hilucs MSP	http://www.geoportal.ulpgc.es/registro/plannedLandUse/HilucsExt/4_1_4_3_MaritimeTrafficLanes.html
Sea use name	Maritime Traffic flows
Sea use function	Forbidden
Sea use description	Anchoring is forbidden, with the exception of emergency anchoring and those related to the maintenance of the technical infrastructure.
Original use name	Transport
Original use name (En)	Transport
Regulation nature	Council of Ministers Ordinance
Vertical distribution	n/a
Specific presence	n/a
Valid from	5/22/21 12:00 AM
Valid to	n/a
Previous MSP plan	n/a
Spatial plan ID	POM
Distance to coast (m)	28569.55
Area (sq. km)	1140.55
Local ID	PZP_55
Version ID	1
Official source	https://dziennikustaw.gov.pl/D2021000093501.pdf
Member state	Poland
Hilucs land use	http://inspire.ec.europa.eu/codelist/HILUCSValue/6_OtherUses
Hilucs MSP	http://www.geoportal.ulpgc.es/registro/plannedLandUse/HilucsExt/6_OtherUses.html
Sea use name	Other/miscellaneous
Sea use function	Forbidden
Sea use description	Anchoring is forbidden, with the exception of emergency anchoring and those related to the maintenance of the technical infrastructure.
Original use name	Infrastruktura techniczna
Original use name (En)	Technical infrastructure



EMODnet



Priority – For instance: transport routes in Estonia

ACTIVITIES WITH PRECEDENCE OVER ANY OTHER

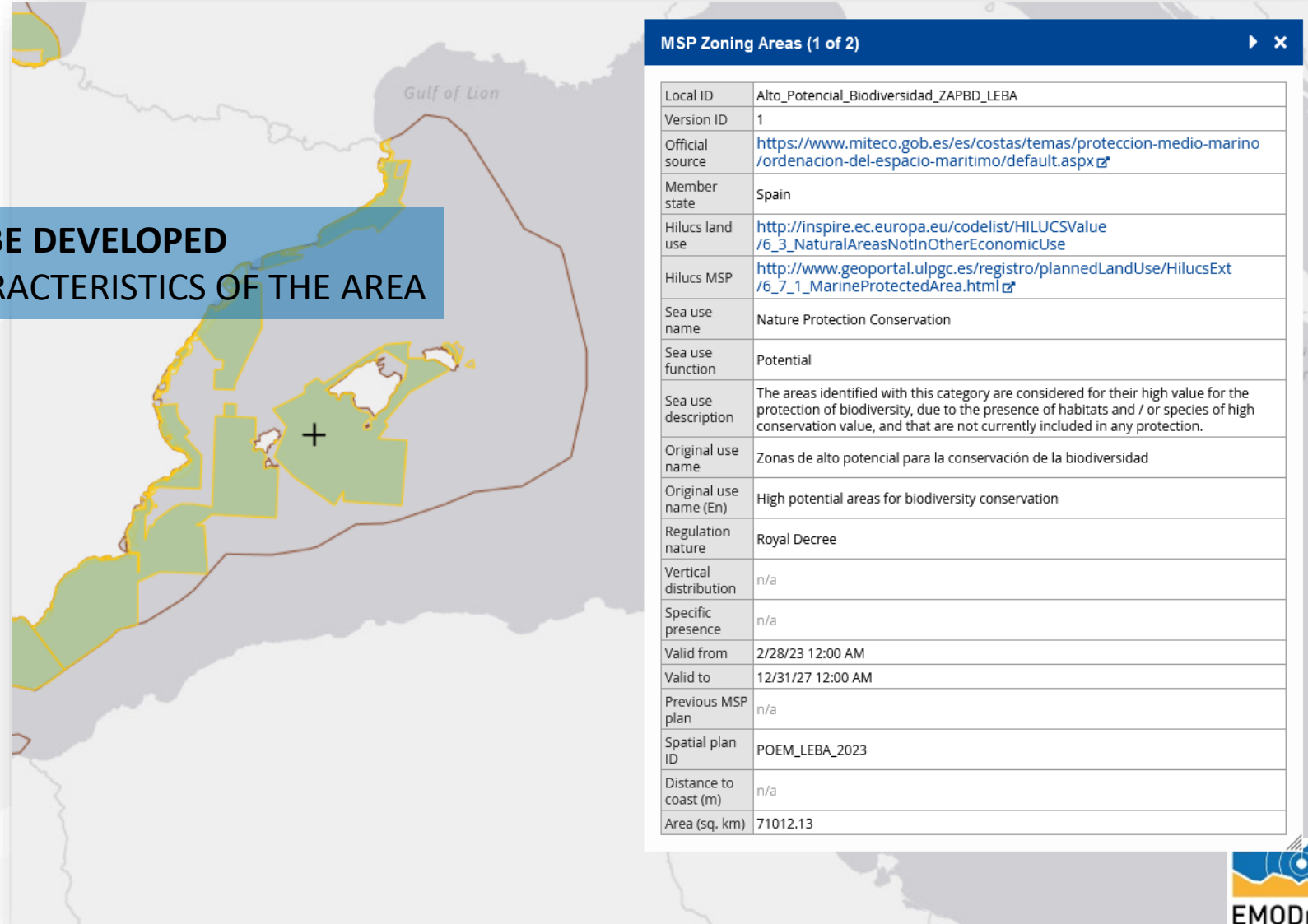
MSP Zoning Areas (1 of 2)

Local ID	MSP.EE.110001_8
Version ID	1
Official source	https://www.fin.ee/riik-ja-omavalitsused-planeeringud/ruumiline-planeerimine/mereala-planeering
Member state	Estonia
Hilucs land use	http://inspire.ec.europa.eu/codelist/HILUCSValue/4_1_4_WaterTransport
Hilucs MSP	http://www.geoportal.ulpgc.es/registro/plannedLandUse/HilucsExt/4_1_4_3_MaritimeTrafficLanes.html
Sea use name	Maritime Traffic flows
Sea use function	Priority
Sea use description	International water traffic area
Original use name	transport
Original use name (En)	transport
Regulation nature	Order of the Government of the Republic
Vertical distribution	n/a
Specific presence	n/a
Valid from	5/12/22 12:00 AM
Valid to	n/a
Previous MSP plan	n/a
Spatial plan ID	MSP.EE.110001
Distance to coast (m)	370.07
Area (sq. km)	4112.91



Potential – For instance: nature conservation in Spain

**ACTIVITIES THAT COULD BE DEVELOPED
ACCORDING TO THE CHARACTERISTICS OF THE AREA**



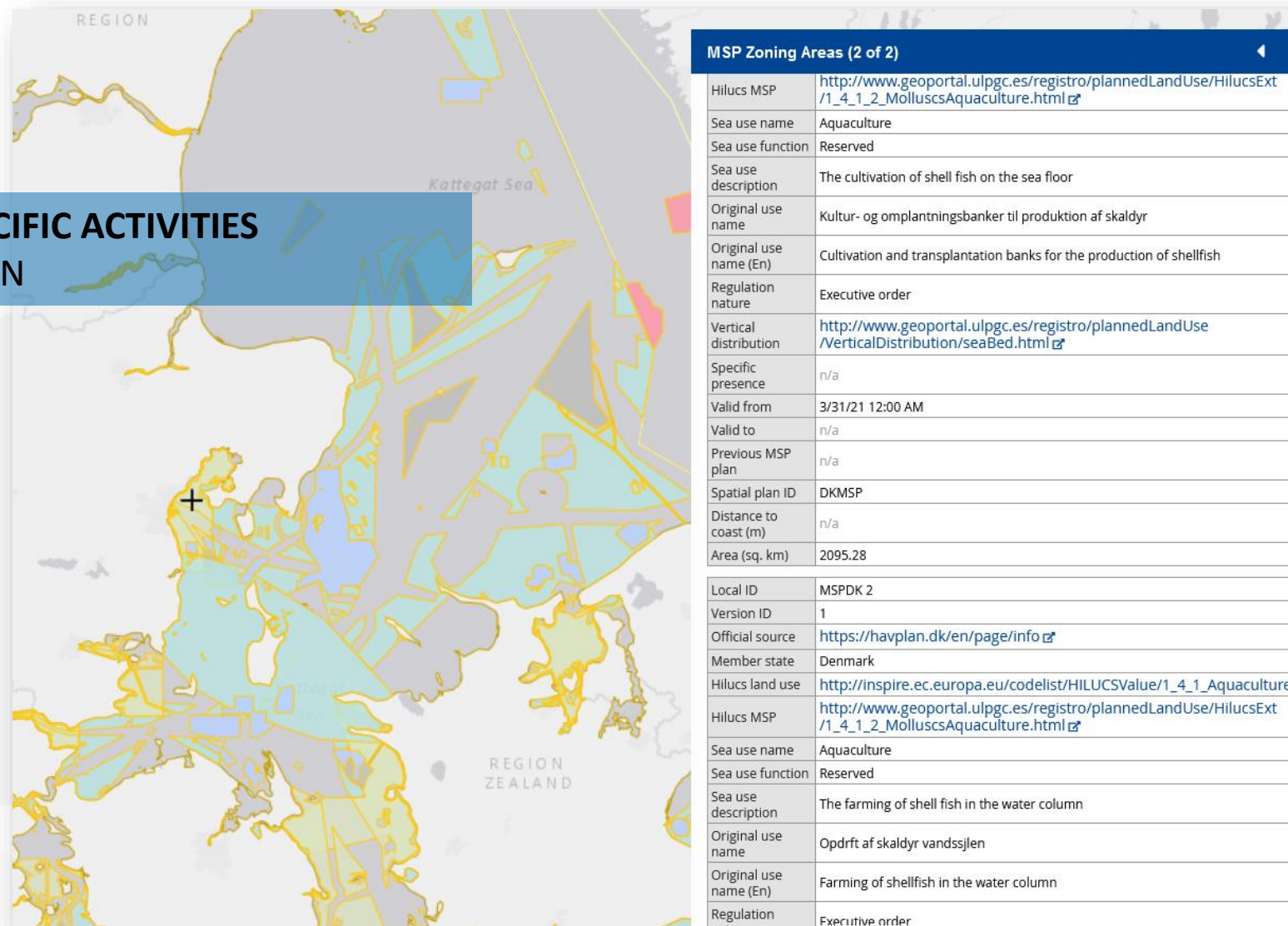


EMODnet



Reserved – For instance: aquaculture in Denmark

AREAS TO DEVELOP SPECIFIC ACTIVITIES
ACCORDING TO THE PLAN





EMODnet



Restricted – For instance: fishing areas in Netherlands

SPECIFIC ACTIVITIES THAT CAN NOT BE CARRIED OUT IN A GIVEN AREA

MSP Zoning Areas (1 of 2)

Local ID	zones_waar_visserijactiviteiten_deels_worden_beperkt_9
Version ID	1
Official source	https://www.noordzeeloket.nl/beleid/programma-noordzee-2022-2027/
Member state	Netherlands
Hilucs land use	http://inspire.ec.europa.eu/codelist/HILUCSValue/1_4_2_ProfessionalFishing
Hilucs MSP	http://www.geoportal.ulpgc.es/registro/plannedLandUse/HilucsExt/1_4_2_ProfessionalFishing.html
Sea use name	Fishing areas
Sea use function	Restricted
Sea use description	Zones where fishing activities are (partially) restricted - Friese Front
Original use name	Zones waar visserijactiviteiten (deels) worden beperkt
Original use name (En)	Zones where fishing activities are (partially) restricted
Regulation nature	Policy document
Vertical distribution	n/a
Specific presence	n/a
Valid from	3/18/22 12:00 AM
Valid to	12/31/27 12:00 AM
Previous MSP plan	https://www.government.nl/binaries/government/documenten/policy-notes/2015/12/15/policy-document-on-the-north-sea-2016-2021/nz-gebeidscherm.pdf
Spatial plan ID	programma-noordzee-2022-2027-web-toegankelijk
Distance to coast (m)	39353.22
Area (sq. km)	2883.36

EMODnet European Marine Observation and Data Network



EMODnet



COMBINE FUNCTIONS AND ACTIVITIES

The image displays a screenshot of the EMODnet web interface, showing a map of the Baltic Sea region with several filter panels overlaid. The map highlights specific areas in green and yellow, representing different MSP Zoning Areas. The filter panels are titled "Filter layer: MSP Zoning Areas" and contain the following options:

- Member State:** A dropdown menu with the text "Select an option".
- Sea Use Function:** A dropdown menu with the text "Forbbidden".
- Sea Use Name:** A dropdown menu with the text "Fishing areas".

Each filter panel includes "Clear" and "Apply" buttons. The background map shows various geographical features and labels, including "UTRECHT", "BLEKINGE COUNTY", "NETHERLANDS BELGIUM", "POMORSKIE VOIVODSHIP", "WARMINSKO-MAZURSKIE VOIVODSHIP", "ZACHODNIOPOMORSKIE VOIVODSHIP", "CENTRAL DENMARK REGION", "DENMARK REGION", "MECKLENBURG - WESTERN POMERANIA", and "ZACHODNIOPOMORSKIE VOIVODSHIP".



EMODnet



European Marine
Observation and
Data Network

- Go to the EMODnet Portal
- Catalogue/EMODnet Human Activities/Maritime Spatial Planning
- Select the information to display
- Check in the map the information filtering by:
 - Member State
 - Sea use Function (allowed, forbidden...)
 - Sea use Name (aquaculture, fishing, energy...)

MSP Zoning Locations

Local ID	RD20190522_art22_20200303_nl_t Vliegend Hart
Version ID	1
Official source	https://www.health.belgium.be/sites/default/files/uploads/fields/fpshealth_theme_file/msp-2020-englishtranslation.pdf
Member state	Belgium
Hilucs land use	http://inspire.ec.europa.eu/codelist/HILUCSValue/3_4_1_CulturalServices
Hilucs MSP	http://www.geoportal.ulpgc.es/registro/plannedLandUse/HilucsExt/3_4_7_UnderwaterCulturalHeritage.html
Sea use name	Cultural heritage
Sea use function	Allowed
Sea use description	The restriction regarding anchoring laid down in paragraph 1 does not apply for diving around the cultural heritage when notified through an electronic form to the Directorate-General Shipping of the Federal Public Service Mobility
Original use name	Zones voor de bescherming van cultureel erfgoed onder water
Original use name (En)	Zones for the protection of underwater cultural heritage
Regulation nature	Royal Decree
Vertical distribution	n/a
Specific presence	n/a
Valid from	1/1/20 12:00 AM
Valid to	12/31/26 12:00 AM
Previous MSP plan	http://odnature.naturalsciences.be/downloads/marine-atlas/MRP2014.pdf
Spatial plan ID	2020_background-map_en
Distance to coast (m)	15759.72



EMODnet



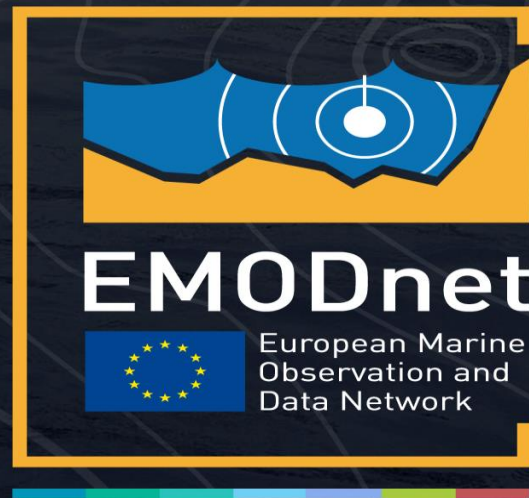
Next steps

- ① **France** and **Italy** are harmonizing their plans according to the agreed model in TEG
- ① Collaborative efforts with **Croatia** in the development of their plan
- ① Other MS express their **lack of GIS information** dedicated to MSP (focus on current activities)
- ① The **Technical Expert Group** of MSP data contribute to harmonize, validate and strengthen the **communication with Member States**
- ① Further developments in the **visualization** to display clearly the overlapping



Prototype of the visualization model

Thank you!



www.emodnet.eu

Your gateway to marine data in Europe

Jose L. Santiago

jsantiago@cetmar.org



please accept my sincere
apologies for not attending the
event and **thank you so much to
Marta for this presentation**