



Empowered lives.  
Resilient nations.



United Nations  
Educational, Scientific and  
Cultural Organization



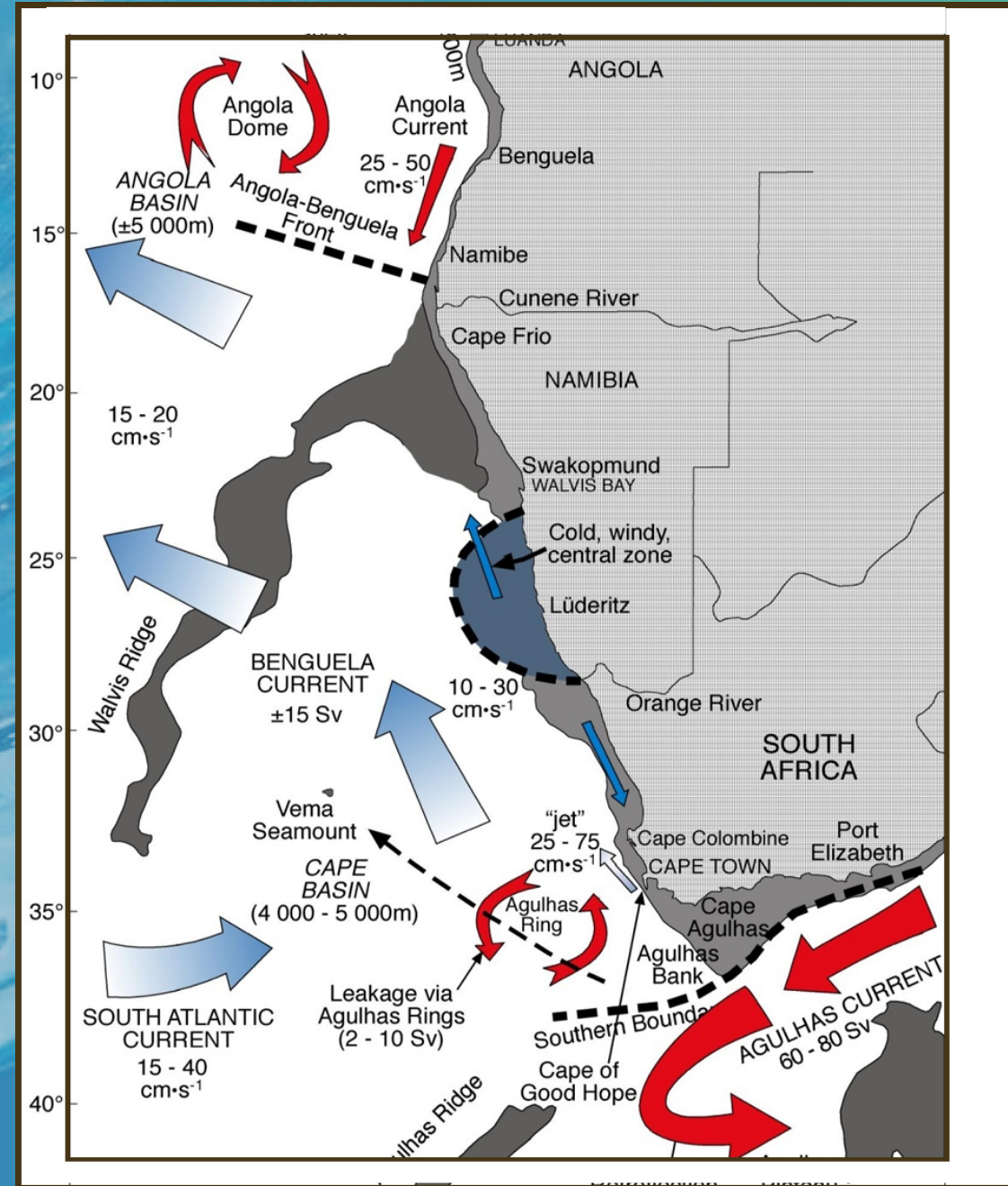
Intergovernmental  
Oceanographic  
Commission

# Marine Spatial Planning in the Benguela Current LME

Joao de Carvalho

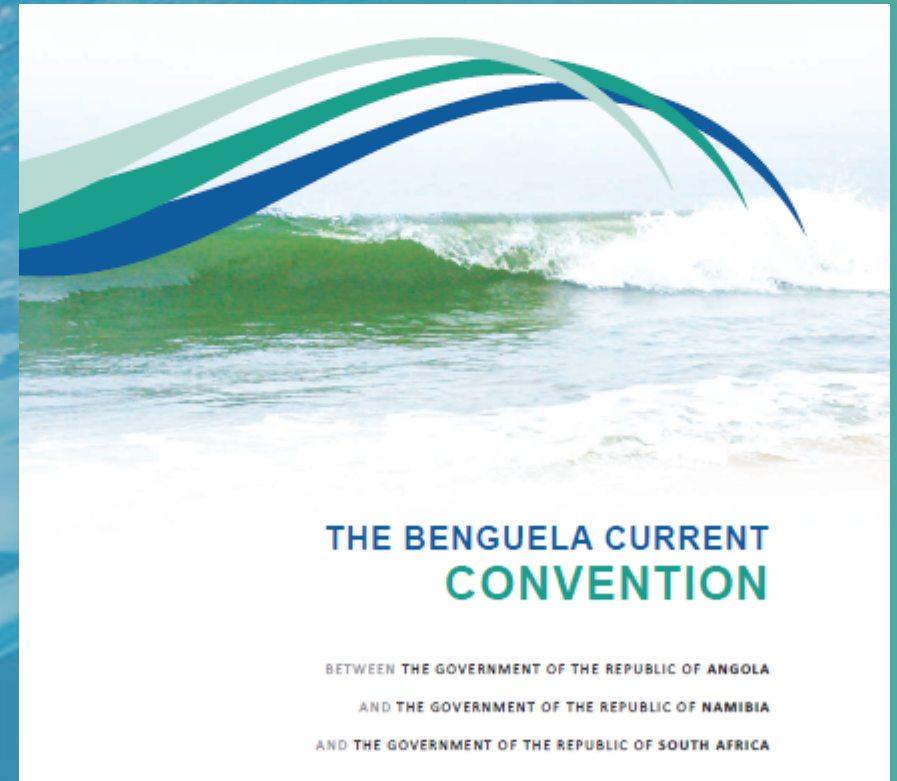
## The Benguela Current LME

- Encompasses one of the four major eastern-boundary coastal upwelling ecosystems of the world
- One of the most productive ocean areas in the world
- Complex, highly variable ecosystem
- Important global reservoir of biodiversity and biomass
- Important to local and national economies



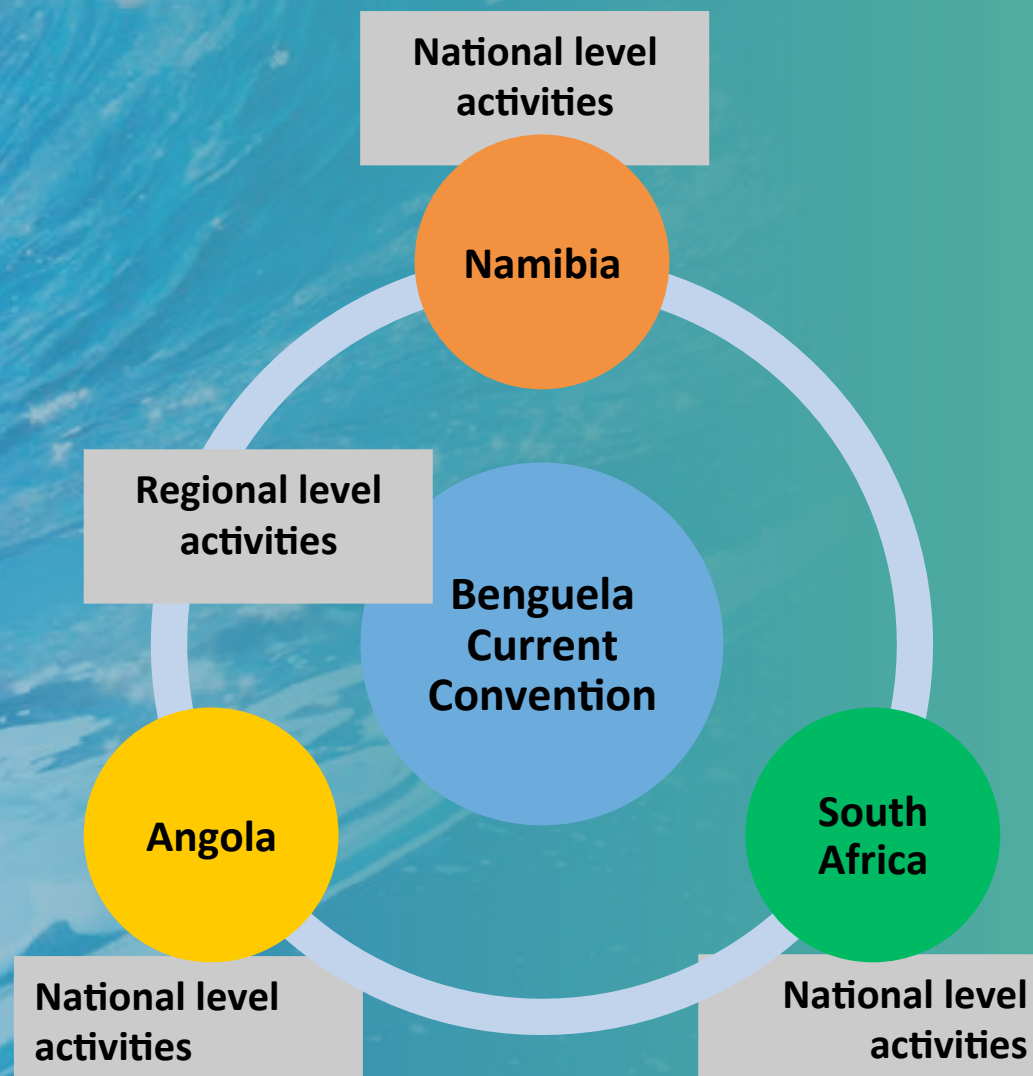
## The Benguela Current Convention

- BCLME cooperation began in the 1990's, driven by the countries and supported by international partners (notably GEF, Germany, Norway)
- Interim agreement in 2007 established the Commission as an inter-governmental partnership
- The Convention was ratified in 2014 and entered into force in 2017
- The BCC is a multi-sector Convention (fisheries, transport, environment, mineral resources) that aims at integrated, ecosystem-based management of the BCLME



## The process of MSP in the BCLME

- MSP emerged as a country-driven need in 2012 on the basis of national policy initiatives to unlock the ocean's economic potential such as Operation Phakisa in South Africa
- MSP was agreed as a top priority in the 2015-2019 Strategic Action Programme
- In 2015, the development partnership between BCC and Germany was established to support the process of initiating MSP through the MARISMA project (GIZ provides technical support)
- MSP implementation takes place on the basis of a two-pronged approach: national-level and regional-level working groups



## The status of MSP in the BCLME and first results

### ANGOLA

- **Current Status Report for the 1<sup>st</sup> area is developed and currently being approved**
- **MSP is now institutionalized as a new department into the Ministry of Fisheries which is now mandated to deal with Sea Affairs as well**

### NAMIBIA

- **Current Status Report for the 1<sup>st</sup> area is developed, currently ongoing: development of the first plan's key elements**
- **The new National Development Plan identifies MSP as a key mechanism to enhance the blue economy**

### SOUTH AFRICA

- **Draft MSP bill is currently in Parliament and will provide the legal foundation**
- **The gazetted MSP framework provides high-level guidance for undertaking MSP, currently ongoing: development of a national knowledge baseline report (status assessment)**

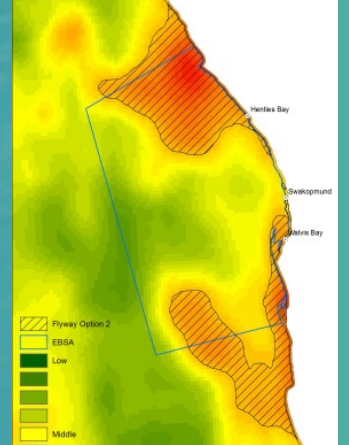
### REGIONAL

- **Sharing and generation of knowledge and experiences between the three countries**
- **The regional MSP working group currently in the process of drafting a regional MSP strategy that will guide a coherent and consistent approach to MSP**



## Challenges identified so far

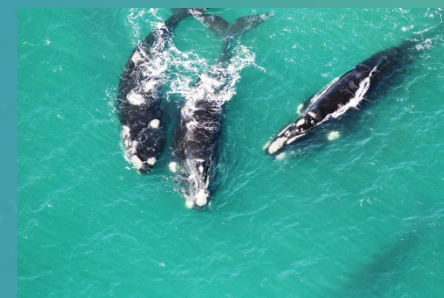
- **Lack of data and information (especially offshore and concerning biodiversity or certain sectors such as tourism, heritage, petroleum)**
- **Limited financial and human resources and linked sustainability challenges**
- **Limited legislative basis (bottom-up processes in Angola and Namibia rely on political support to create an enabling legislative environment)**
- **It takes considerable time to time to create awareness, support and relationships within government and externally with stakeholders**
- **Integration of small-scale fishermen's concerns and interests, and climate change aspects**



## Opportunities identified so far

- Growing together as one region through a joint and cross-border learning journey under the LME umbrella
- Transboundary MSP in BCLME can build on grown structures and personal relationships at both political and technical levels
- Use MSP as a practical and concrete process to stimulate better ocean governance both nationally and regionally
- MSP helps to identify knowledge gaps and future areas of work that need (research) attention – nationally and across borders
- Build on and integrate national and regional systematic conservation planning processes and knowledge to inform MSP (e.g. EBSAs)

*“Think regionally from the outset when starting nationally”*





## Good practices

- **Demystify MSP and decrease complexity: Simple-language awareness-raising serves as an entry point to build partnerships and support (e.g. MSP in a nutshell film)**
- **Dialogue and learning across ministries, countries and with other regions helps to transfer knowledge and generate ideas (study tours to Portugal, Netherlands, Scotland, exchanges of the BCC working group with DG MARE, HELCOM and VASAB)**
- **A collective responsibility for MSP across sector ministries (national working groups) and countries (regional working group) is an “enabler”**
- **A learning-by-doing approach with a technical support team (GIZ) eases the initiation of MSP in developing country contexts**



THANK YOU

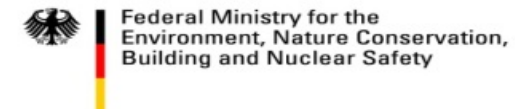


**MARISMA**

Enabling Sustainable Ocean Use  
in the Benguela Current Region



On behalf of:



of the Federal Republic of Germany